

Product datasheet for **TA375204S**

beta Catenin (CTNNB1) Rabbit Polyclonal Antibody

Product data:

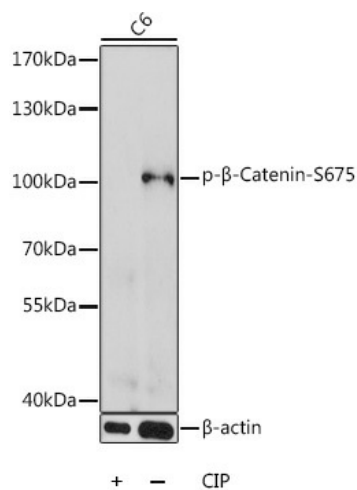
| | |
|-------------------------|---|
| Product Type: | Primary Antibodies |
| Applications: | WB |
| Recommended Dilution: | WB,1:500 - 1:2000 |
| Reactivity: | Human, Rat |
| Modifications: | Phospho S675 |
| Host: | Rabbit |
| Isotype: | IgG |
| Clonality: | Polyclonal |
| Immunogen: | A synthetic phosphorylated peptide around S675 of human beta Catenin (NP_001091679.1). |
| Formulation: | PBS with 0.05% proclin300,50% glycerol,pH7.3. |
| Concentration: | lot specific |
| Purification: | Affinity purification |
| Conjugation: | Unconjugated |
| Storage: | Store at -20°C. Avoid freeze / thaw cycles. |
| Stability: | Shelf life: one year from despatch. |
| Predicted Protein Size: | 9kDa/85kDa |
| Gene Name: | catenin beta 1 |
| Database Link: | Entrez Gene 1499 Human P35222 |
| Background: | <p>The protein encoded by this gene is part of a complex of proteins that constitute adherens junctions (AJs). AJs are necessary for the creation and maintenance of epithelial cell layers by regulating cell growth and adhesion between cells. The encoded protein also anchors the actin cytoskeleton and may be responsible for transmitting the contact inhibition signal that causes cells to stop dividing once the epithelial sheet is complete. Finally, this protein binds to the product of the APC gene, which is mutated in adenomatous polyposis of the colon. Mutations in this gene are a cause of colorectal cancer (CRC), pilomatixoma (PTR), medulloblastoma (MDB), and ovarian cancer. Alternative splicing results in multiple transcript variants.</p> |



[View online »](#)

Synonyms: beta-catenin; CTNNB; DKFZp686D02253; FLJ25606; FLJ37923; OTTHUMP00000209288

Product images:



Western blot analysis of extracts of C6 cells, using Phospho-β-Catenin-S675 antibody ([TA375204]) at 1:1000 dilution. C6 cell lysates were treated by CIP at 37°C for 1 hour. | Secondary antibody: HRP Goat Anti-Rabbit IgG (H+L) at 1:10000 dilution. | Lysates/proteins: 25ug per lane. | Blocking buffer: 3% BSA. | Detection: ECL Enhanced Kit . | Exposure time: 180s.