

## Product datasheet for **TA375196S**

### CTNNA2 Rabbit Polyclonal Antibody

#### Product data:

Product Type:	Primary Antibodies
Applications:	ICC/IF, IHC, WB
Recommended Dilution:	WB,1:200 - 1:2000 IHC,1:50 - 1:200 IF,1:50 - 1:200
Reactivity:	Mouse, Rat, Human
Modifications:	Unmodified
Host:	Rabbit
Isotype:	IgG
Clonality:	Polyclonal
Immunogen:	Recombinant fusion protein containing a sequence corresponding to amino acids 150-300 of human CTNNA2 (NP_004380.2).
Formulation:	Buffer: PBS with 0.02% sodium azide,50% glycerol,pH7.3.
Concentration:	lot specific
Purification:	Affinity purification
Conjugation:	Unconjugated
Storage:	Store at -20°C. Avoid freeze / thaw cycles.
Stability:	Shelf life: one year from despatch.
Predicted Protein Size:	59kDa/65kDa/95kDa/100kDa/104kDa/105kDa
Gene Name:	catenin alpha 2
Database Link:	<a href="#">Entrez Gene 1496 Human P26232</a>



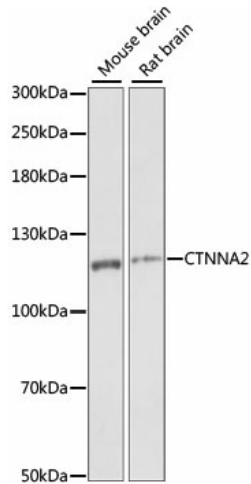
[View online »](#)

**Background:**

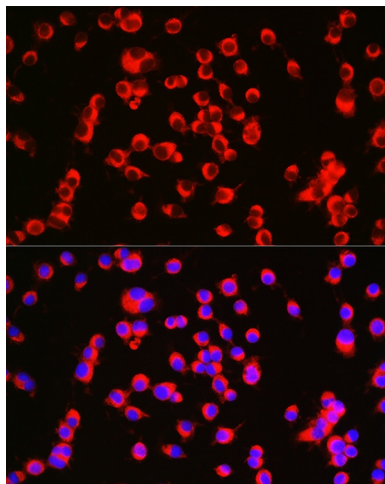
May function as a linker between cadherin adhesion receptors and the cytoskeleton to regulate cell-cell adhesion and differentiation in the nervous system (By similarity. Required for proper regulation of cortical neuronal migration and neurite growth. It acts as negative regulator of Arp2/3 complex activity and Arp2/3-mediated actin polymerization. It thereby suppresses excessive actin branching which would impair neurite growth and stability. Regulates morphological plasticity of synapses and cerebellar and hippocampal lamination during development. Functions in the control of startle modulation (By similarity).

**Synonyms:**

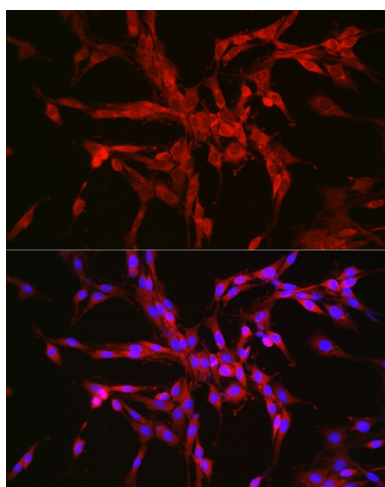
alpha-N-catenin; CAP-R; CAPR; CTNR; DKFZp686H02198

**Product images:**


Western blot analysis of extracts of various cell lines, using CTNNA2 antibody ([TA375196]) at 1:1000 dilution. | Secondary antibody: HRP Goat Anti-Rabbit IgG (H+L) at 1:10000 dilution. | Lysates/proteins: 25ug per lane. | Blocking buffer: 3% nonfat dry milk in TBST. | Detection: ECL Enhanced Kit . | Exposure time: 1S.



Immunofluorescence analysis of Neuro-2a cells using CTNNA2 Rabbit pAb ([TA375196]) at dilution of 1:100 (40x lens). Blue: DAPI for nuclear staining.



Immunofluorescence analysis of PC-12 cells using CTNNA2 Rabbit pAb ([TA375196]) at dilution of 1:100 (40x lens). Blue: DAPI for nuclear staining.