

Product datasheet for **TA375193**

CTLA4 Rabbit Polyclonal Antibody

Product data:

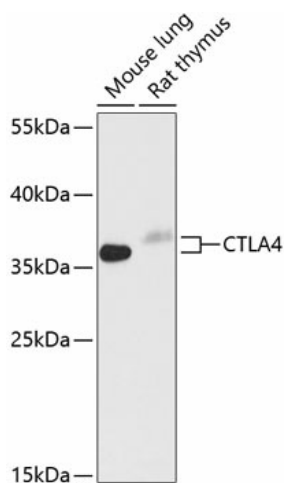
Product Type:	Primary Antibodies
Applications:	WB
Recommended Dilution:	WB,1:500 - 1:2000
Reactivity:	Human, Mouse, Rat
Modifications:	Unmodified
Host:	Rabbit
Isotype:	IgG
Clonality:	Polyclonal
Immunogen:	Recombinant fusion protein containing a sequence corresponding to amino acids 49-223 of human CTLA4 (NP_005205.2).
Formulation:	PBS with 0.09% Sodium azide,50% glycerol,pH7.3.
Concentration:	lot specific
Purification:	Affinity purification
Conjugation:	Unconjugated
Storage:	Store at -20°C. Avoid freeze / thaw cycles.
Stability:	Shelf life: one year from despatch.
Predicted Protein Size:	6kDa/8kDa/19kDa/24kDa
Gene Name:	cytotoxic T-lymphocyte associated protein 4
Database Link:	Entrez Gene 1493 Human P16410
Background:	<p>This gene is a member of the immunoglobulin superfamily and encodes a protein which transmits an inhibitory signal to T cells. The protein contains a V domain, a transmembrane domain, and a cytoplasmic tail. Alternate transcriptional splice variants, encoding different isoforms, have been characterized. The membrane-bound isoform functions as a homodimer interconnected by a disulfide bond, while the soluble isoform functions as a monomer. Mutations in this gene have been associated with insulin-dependent diabetes mellitus, Graves disease, Hashimoto thyroiditis, celiac disease, systemic lupus erythematosus, thyroid-associated orbitopathy, and other autoimmune diseases.</p>



[View online »](#)

Synonyms: CD; CD28; CD152; CELIAC3; CTLA-4; GRD4; GSE; ICOS; IDDM12

Product images:



Western blot analysis of extracts of various cell lines, using CTLA4 antibody (TA375193) at 1:1000 dilution. | Secondary antibody: HRP Goat Anti-Rabbit IgG (H+L) at 1:10000 dilution. | Lysates/proteins: 25ug per lane. | Blocking buffer: 3% nonfat dry milk in TBST. | Detection: ECL Basic Kit . | Exposure time: 10s.