

## Product datasheet for **TA375188**

### CCN2 Rabbit Polyclonal Antibody

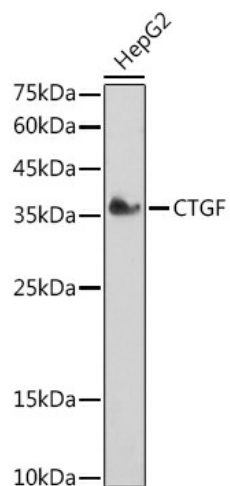
#### Product data:

Product Type:	Primary Antibodies
Applications:	ICC/IF, WB
Recommended Dilution:	WB,1:500 - 1:2000 IHC,1:50 - 1:200 IF,1:20 - 1:50
Reactivity:	Human, Mouse, Rat
Modifications:	Unmodified
Host:	Rabbit
Isotype:	IgG
Clonality:	Polyclonal
Immunogen:	Recombinant fusion protein containing a sequence corresponding to amino acids 27-349 of human CTGF (NP_001892.1).
Formulation:	Buffer: PBS with 0.02% sodium azide,50% glycerol,pH7.3.
Concentration:	lot specific
Purification:	Affinity purification
Conjugation:	Unconjugated
Storage:	Store at -20°C. Avoid freeze / thaw cycles.
Stability:	Shelf life: one year from despatch.
Predicted Protein Size:	35kDa/38kDa
Gene Name:	connective tissue growth factor
Database Link:	<a href="#">Entrez Gene 1490 Human P29279</a>
Background:	The protein encoded by this gene is a mitogen that is secreted by vascular endothelial cells. The encoded protein plays a role in chondrocyte proliferation and differentiation, cell adhesion in many cell types, and is related to platelet-derived growth factor. Certain polymorphisms in this gene have been linked with a higher incidence of systemic sclerosis.
Synonyms:	CCN2; HCS24; IGFBP8; MGC102839; NOV2

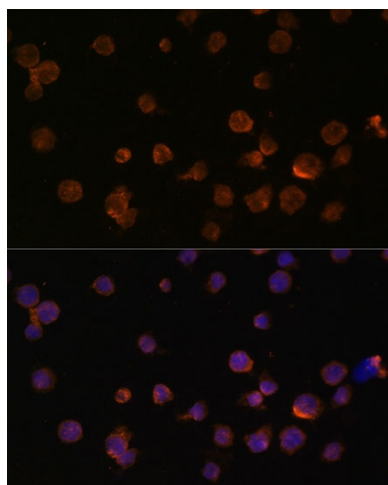


[View online »](#)

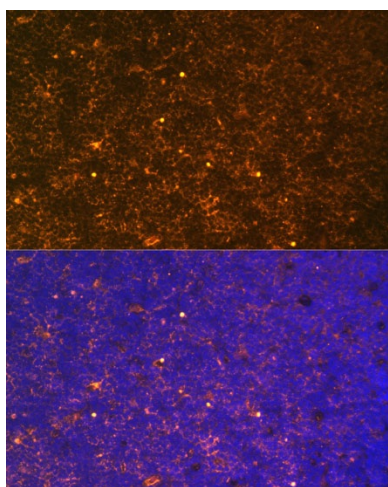
## Product images:



Western blot analysis of extracts of HepG2 cells, using CTGF antibody (TA375188) at 1:1000 dilution. | Secondary antibody: HRP Goat Anti-Rabbit IgG (H+L) at 1:10000 dilution. | Lysates/proteins: 25ug per lane. | Blocking buffer: 3% nonfat dry milk in TBST. | Detection: ECL Basic Kit. | Exposure time: 180s.



Immunofluorescence analysis of THP-1 cells using CTGF antibody (TA375188) at dilution of 1:100. Blue: DAPI for nuclear staining.



Immunofluorescence analysis of rat thymus using CTGF antibody (TA375188) at dilution of 1:100.  
Blue: DAPI for nuclear staining.