

## Product datasheet for **TA375186**

### CTCF Rabbit Polyclonal Antibody

#### Product data:

|                         |   |
|-------------------------|---|
| Product Type:           | Primary Antibodies  |
| Applications:           | ChIP, IHC, IP, WB   |
| Recommended Dilution:   | WB,1:500 - 1:2000<br>IHC,1:50 - 1:200<br>IP,1:50 - 1:200<br>ChIP,1:50 - 1:200 |
| Reactivity:             | Human, Mouse, Rat   |
| Host:                   | Rabbit  |
| Isotype:                | IgG   |
| Clonality:              | Polyclonal  |
| Immunogen:              | Recombinant protein of human CTCF.  |
| Formulation:            | Buffer: PBS with 0.02% sodium azide,50% glycerol,pH7.3.                       |
| Concentration:          | lot specific  |
| Purification:           | Affinity purification   |
| Conjugation:            | Unconjugated  |
| Storage:                | Store at -20°C. Avoid freeze / thaw cycles.                                   |
| Stability:              | Shelf life: one year from despatch.   |
| Predicted Protein Size: | 45kDa/82kDa   |
| Gene Name:              | CCCTC-binding factor  |
| Database Link:          | <a href="#">Entrez Gene 10664 Human P49711</a>                                |



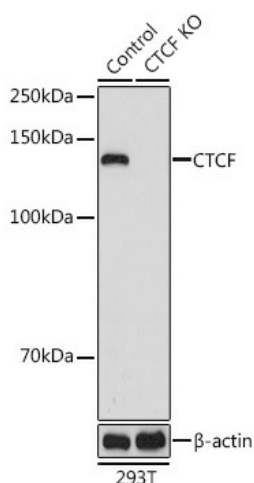
[View online »](#)

**Background:**

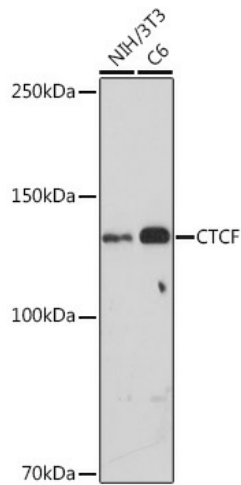
This gene is a member of the BORIS + CTCF gene family and encodes a transcriptional regulator protein with 11 highly conserved zinc finger (ZF) domains. This nuclear protein is able to use different combinations of the ZF domains to bind different DNA target sequences and proteins. Depending upon the context of the site, the protein can bind a histone acetyltransferase (HAT)-containing complex and function as a transcriptional activator or bind a histone deacetylase (HDAC)-containing complex and function as a transcriptional repressor. If the protein is bound to a transcriptional insulator element, it can block communication between enhancers and upstream promoters, thereby regulating imprinted expression. Mutations in this gene have been associated with invasive breast cancers, prostate cancers, and Wilms' tumors. Alternatively spliced transcript variants encoding different isoforms have been found for this gene.

**Synonyms:**

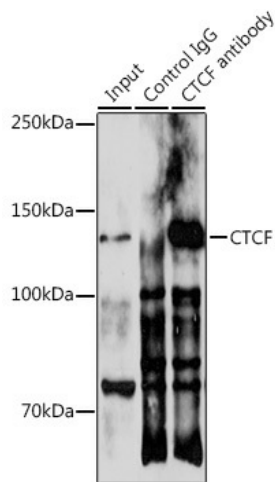
CTCF

**Product images:**

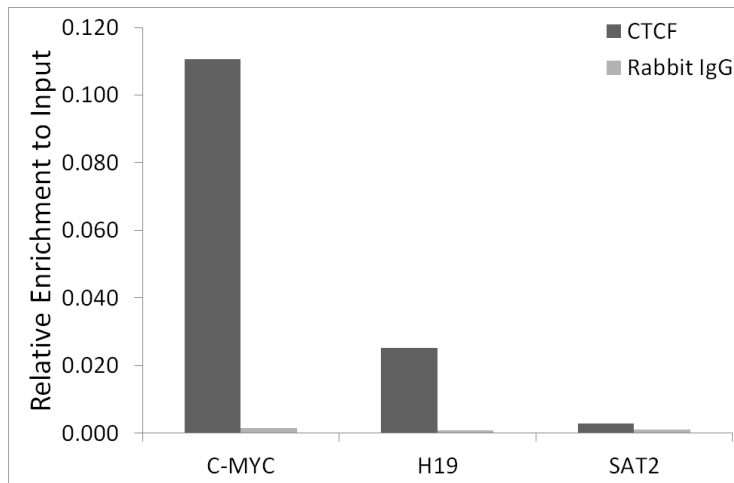
Western blot analysis of extracts from normal (control) and CTCF knockout (KO) 293T cells, using CTCF antibody (TA375186) at 1:1000 dilution. | Secondary antibody: HRP Goat Anti-Rabbit IgG (H+L) at 1:10000 dilution. | Lysates/proteins: 25ug per lane. | Blocking buffer: 3% nonfat dry milk in TBST. | Detection: ECL Basic Kit . | Exposure time: 10s.



Western blot analysis of extracts of various cell lines, using CTCF antibody (TA375186) at 1:500 dilution. |Secondary antibody: HRP Goat Anti-Rabbit IgG (H+L) at 1:10000 dilution. |Lysates/proteins: 25ug per lane. |Blocking buffer: 3% nonfat dry milk in TBST. |Detection: ECL Basic Kit . |Exposure time: 30s.



Immunoprecipitation analysis of 300ug extracts of 293T cells using 3ug CTCF antibody (TA375186). Western blot was performed from the immunoprecipitate using CTCF antibody (TA375186) at a dilution of 1:500.



Chromatin immunoprecipitation analysis of extracts of HeLa cells, using CTCF antibody (TA375186) and rabbit IgG. The amount of immunoprecipitated DNA was checked by quantitative PCR. Histogram was constructed by the ratios of the immunoprecipitated DNA to the input.