

Product datasheet for **TA375178S**

CTAGE1 Rabbit Polyclonal Antibody

Product data:

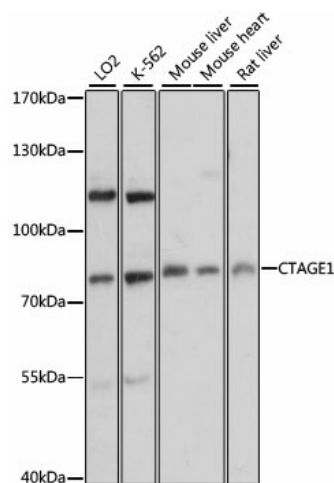
Product Type:	Primary Antibodies
Applications:	ELISA, WB
Recommended Dilution:	WB, 1:1000 – 1:2000 ELISA, Recommended starting concentration is 1 µg/mL. Please optimize the concentration based on your specific assay requirements.
Reactivity:	Human, Mouse, Rat
Modifications:	Unmodified
Host:	Rabbit
Isotype:	IgG
Clonality:	Polyclonal
Formulation:	Buffer: PBS with 0.02% sodium azide, 50% glycerol, pH 7.3.
Concentration:	lot specific
Purification:	Affinity purification
Conjugation:	Unconjugated
Storage:	Store at -20°C. Avoid freeze / thaw cycles.
Stability:	Shelf life: one year from despatch.
Predicted Protein Size:	85kDa
Gene Name:	cutaneous T-cell lymphoma-associated antigen 1
Database Link:	Entrez Gene 64693 Human Q96RT6



Background: Predicted to be involved in endoplasmic reticulum to Golgi vesicle-mediated transport; protein secretion; and vesicle cargo loading. Predicted to be integral component of membrane. Predicted to be active in endoplasmic reticulum exit site and endoplasmic reticulum membrane.

Synonyms: CT21.1; CT21.2; CTAGE; CTAGE-1; cTAGE-2; CTAGE2

Product images:



Western blot analysis of various lysates using CTAGE1 Rabbit pAb (TA375178) at 1:3000 dilution.

Secondary antibody: HRP-conjugated Goat anti-Rabbit IgG (H+L) at 1:10000 dilution.

Lysates/proteins: 25µg per lane.

Blocking buffer: 3% nonfat dry milk in TBST.

Detection: ECL Basic Kit .

Exposure time: 1s.