

## Product datasheet for **TA375157**

### Casein Kinase 2 beta (CSNK2B) Rabbit Polyclonal Antibody

#### Product data:

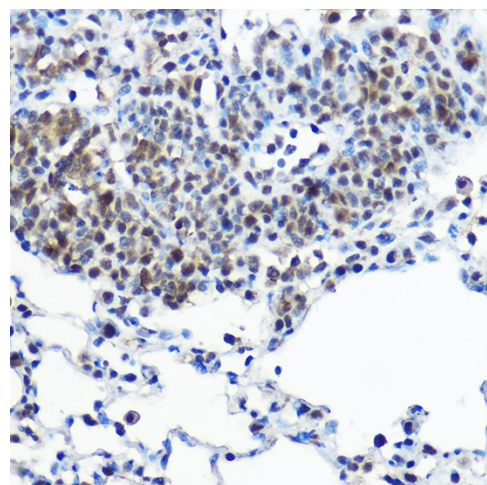
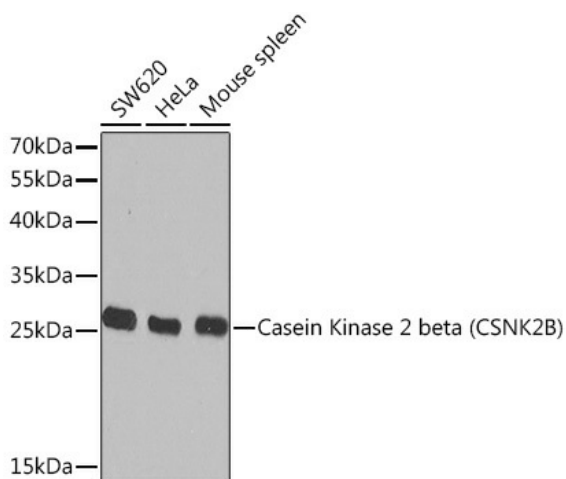
Product Type:	Primary Antibodies
Applications:	IHC, WB
Recommended Dilution:	WB,1:500 - 1:2000 IHC,1:50 - 1:200
Reactivity:	Human, Mouse, Rat
Modifications:	Unmodified
Host:	Rabbit
Isotype:	IgG
Clonality:	Polyclonal
Immunogen:	Recombinant fusion protein containing a sequence corresponding to amino acids 1-215 of human Casein Kinase 2 beta (Casein Kinase 2 beta (CSNK2B)) (NP_001311.3).
Formulation:	Buffer: PBS with 0.02% sodium azide,50% glycerol,pH7.3.
Concentration:	lot specific
Purification:	Affinity purification
Conjugation:	Unconjugated
Storage:	Store at -20°C. Avoid freeze / thaw cycles.
Stability:	Shelf life: one year from despatch.
Predicted Protein Size:	24kDa
Gene Name:	casein kinase 2 beta
Database Link:	<a href="#">Entrez Gene 1460 Human P67870</a>
Background:	This gene encodes the beta subunit of casein kinase II, a ubiquitous protein kinase which regulates metabolic pathways, signal transduction, transcription, translation, and replication. The enzyme is composed of three subunits, alpha, alpha prime and beta, which form a tetrameric holoenzyme. The alpha and alpha prime subunits are catalytic, while the beta subunit serves regulatory functions. The enzyme localizes to the endoplasmic reticulum and the Golgi apparatus. Two transcript variants encoding different isoforms have been found for this gene. [provided by RefSeq, Sep 2013]

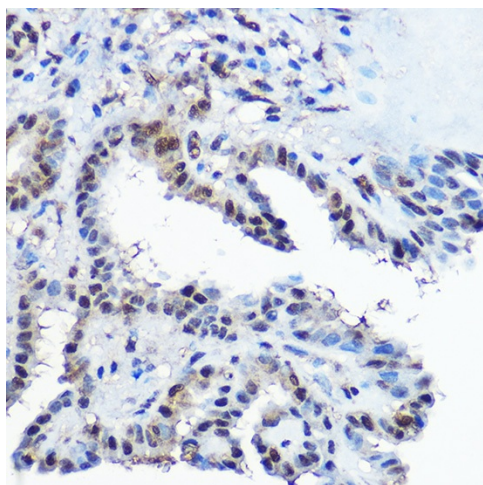


[View online »](#)

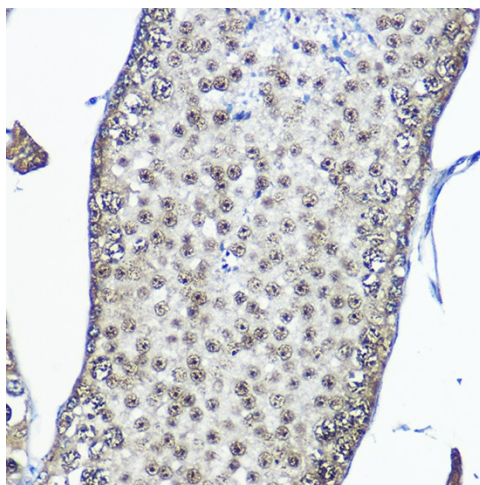
**Synonyms:** CK2B; CK2N; CSK2B; G5A; MGC138222; MGC138224; OTTHUMP00000029063; OTTHUMP00000029064; phosvitin

**Product images:**





Immunohistochemistry of paraffin-embedded human thyroid cancer using Casein Kinase 2 beta (Casein Kinase 2 beta (CSNK2B)) Rabbit pAb (TA375157) at dilution of 1:100 (40x lens). Perform high pressure antigen retrieval with 10 mM citrate buffer pH 6.0 before commencing with IHC staining protocol.



Immunohistochemistry of paraffin-embedded mouse testis using Casein Kinase 2 beta (Casein Kinase 2 beta (CSNK2B)) Rabbit pAb (TA375157) at dilution of 1:100 (40x lens). Perform high pressure antigen retrieval with 10 mM citrate buffer pH 6.0 before commencing with IHC staining protocol.