

## Product datasheet for **TA375155**

### CSNK2A2 Rabbit Polyclonal Antibody

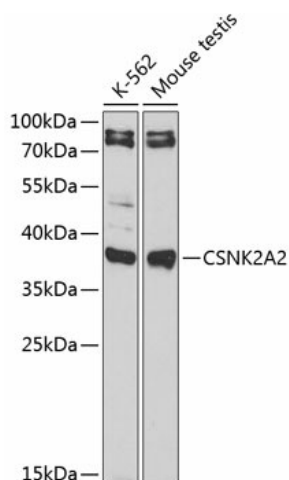
#### Product data:

Product Type:	Primary Antibodies
Applications:	ICC/IF, IHC, WB
Recommended Dilution:	WB,1:500 - 1:2000 IHC,1:50 - 1:100 IF,1:50 - 1:100
Reactivity:	Human, Mouse, Rat
Modifications:	Unmodified
Host:	Rabbit
Isotype:	IgG
Clonality:	Polyclonal
Immunogen:	Recombinant fusion protein containing a sequence corresponding to amino acids 1-350 of human CSNK2A2 (NP_001887.1).
Formulation:	Buffer: PBS with 0.02% sodium azide,50% glycerol,pH7.3.
Concentration:	lot specific
Purification:	Affinity purification
Conjugation:	Unconjugated
Storage:	Store at -20°C. Avoid freeze / thaw cycles.
Stability:	Shelf life: one year from despatch.
Predicted Protein Size:	41kDa
Gene Name:	casein kinase 2 alpha 2
Database Link:	<a href="#">Entrez Gene 1459 Human P19784</a>
Synonyms:	CK2A2; CSNK2A1; FLJ43934

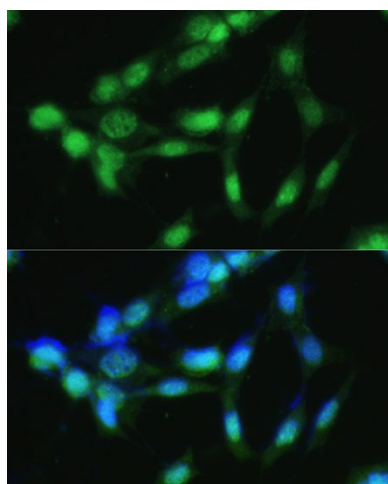


[View online »](#)

## Product images:



Western blot analysis of extracts of various cell lines, using CSNK2A2 antibody (TA375155) at 1:1000 dilution. | Secondary antibody: HRP Goat Anti-Rabbit IgG (H+L) at 1:10000 dilution. | Lysates/proteins: 25ug per lane. | Blocking buffer: 3% nonfat dry milk in TBST.



Immunofluorescence analysis of NIH-3T3 cells using CSNK2A2 Polyclonal Antibody (TA375155) at dilution of 1:100 (40x lens). Blue: DAPI for nuclear staining.