

## Product datasheet for **TA375146S**

### Casein Kinase 1 alpha (CSNK1A1) Rabbit Polyclonal Antibody

#### Product data:

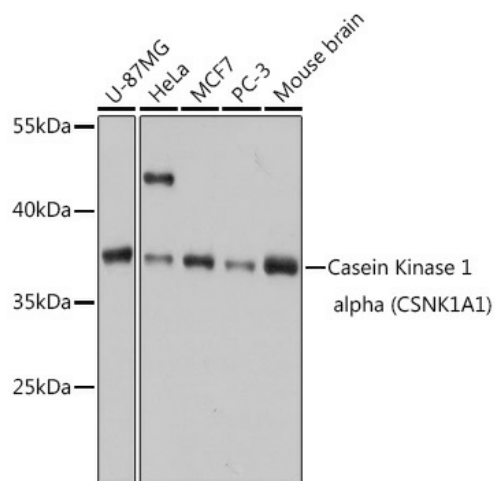
Product Type:	Primary Antibodies
Applications:	ICC/IF, IHC, WB
Recommended Dilution:	WB,1:500 - 1:2000 IHC,1:50 - 1:200 IF,1:50 - 1:200
Reactivity:	Human, Mouse, Rat
Modifications:	Unmodified
Host:	Rabbit
Isotype:	IgG
Clonality:	Polyclonal
Immunogen:	A synthetic peptide corresponding to a sequence within amino acids 100-200 of human Casein Kinase 1 alpha (Casein Kinase 1 alpha (CSNK1A1)) (NP_001020276.1).
Formulation:	Buffer: PBS with 0.02% sodium azide,50% glycerol,pH7.3.
Concentration:	lot specific
Purification:	Affinity purification
Conjugation:	Unconjugated
Storage:	Store at -20°C. Avoid freeze / thaw cycles.
Stability:	Shelf life: one year from despatch.
Predicted Protein Size:	37kDa/38kDa/41kDa
Gene Name:	casein kinase 1 alpha 1
Database Link:	<a href="#">Entrez Gene 1452 Human P48729</a>
Background:	Casein kinases are operationally defined by their preferential utilization of acidic proteins such as caseins as substrates. It can phosphorylate a large number of proteins. Participates in Wnt signaling. Phosphorylates CTNNB1 at 'Ser-45'. May phosphorylate PER1 and PER2. May play a role in segregating chromosomes during mitosis. May play a role in keratin cytoskeleton disassembly and thereby, it may regulate epithelial cell migration.



[View online »](#)

Synonyms: CK1; CKI-alpha; HLCDGP1; PRO2975

### Product images:



Western blot analysis of extracts of various cell lines, using Casein Kinase 1 alpha (Casein Kinase 1 alpha (CSNK1A1)) antibody ([TA375146]) at 1:1000 dilution. | Secondary antibody: HRP Goat Anti-Rabbit IgG (H+L) at 1:10000 dilution. | Lysates/proteins: 25ug per lane. | Blocking buffer: 3% nonfat dry milk in TBST. | Detection: ECL Basic Kit . | Exposure time: 1s.