

Product datasheet for **TA375145**

beta Casein (CSN2) Rabbit Polyclonal Antibody

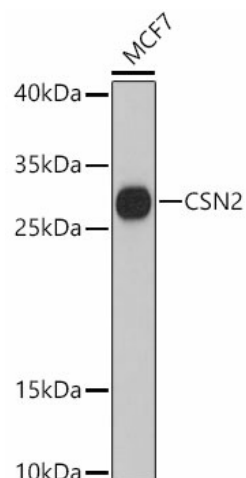
Product data:

Product Type:	Primary Antibodies
Applications:	WB
Recommended Dilution:	WB,1:500 - 1:2000
Reactivity:	Human
Modifications:	Unmodified
Host:	Rabbit
Isotype:	IgG
Clonality:	Polyclonal
Immunogen:	A synthetic peptide corresponding to a sequence within amino acids 1-100 of human CSN2 (NP_001882.1).
Formulation:	Buffer: PBS with 0.02% sodium azide,50% glycerol,pH7.3.
Concentration:	lot specific
Purification:	Affinity purification
Conjugation:	Unconjugated
Storage:	Store at -20°C. Avoid freeze / thaw cycles.
Stability:	Shelf life: one year from despatch.
Predicted Protein Size:	25kDa
Gene Name:	casein beta
Database Link:	Entrez Gene 1447 Human P05814
Background:	This gene is a member of the beta casein family. There are two types of casein protein, beta (encoded by this gene) and kappa, both of which are secreted in human milk. Beta casein is the principal protein in human milk and the primary source of essential amino acids for a suckling infant. Beta and kappa casein proteins acting together form spherical micelles which bind within them important dietary minerals, such as calcium and phosphorous. Alternative splicing results in multiple transcript variants.
Synonyms:	CASB



[View online »](#)

Product images:



Western blot analysis of extracts of MCF7 cells, using CSN2 antibody (TA375145) at 1:3000 dilution. | Secondary antibody: HRP Goat Anti-Rabbit IgG (H+L) at 1:10000 dilution. | Lysates/proteins: 25ug per lane. | Blocking buffer: 3% nonfat dry milk in TBST. | Detection: ECL Basic Kit . | Exposure time: 90s.