

Product datasheet for **TA375143**

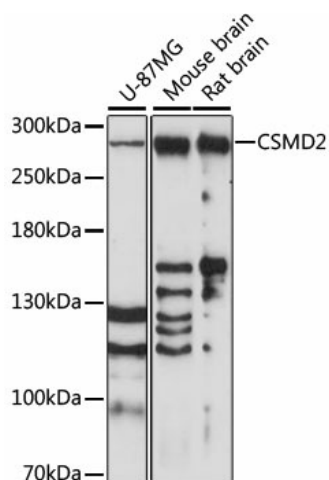
CSMD2 Rabbit Polyclonal Antibody

Product data:

Product Type:	Primary Antibodies
Applications:	WB
Recommended Dilution:	WB,1:500 - 1:2000
Reactivity:	Human, Mouse, Rat
Modifications:	Unmodified
Host:	Rabbit
Isotype:	IgG
Clonality:	Polyclonal
Immunogen:	A synthetic peptide corresponding to a sequence within amino acids 2050-2150 of human CSMD2 (NP_443128.2).
Formulation:	Buffer: PBS with 0.02% sodium azide,50% glycerol,pH7.3.
Concentration:	lot specific
Purification:	Affinity purification
Conjugation:	Unconjugated
Storage:	Store at -20°C. Avoid freeze / thaw cycles.
Stability:	Shelf life: one year from despatch.
Predicted Protein Size:	380kDa
Gene Name:	CUB and Sushi multiple domains 2
Database Link:	Entrez Gene 114784 Human Q7Z408
Background:	The protein encoded by this gene is thought to be involved in the control of complement. Defects in this gene have been associated with schizophrenia. This gene may act as a tumor suppressor for colorectal cancer.
Synonyms:	dj947L8.1; dj1007G16.1; dj1007G16.2; KIAA1884



[View online »](#)

Product images:

Western blot analysis of extracts of various cell lines, using CSMD2 antibody (TA375143) at 1:1000 dilution. | Secondary antibody: HRP Goat Anti-Rabbit IgG (H+L) at 1:10000 dilution. | Lysates/proteins: 25ug per lane. | Blocking buffer: 3% nonfat dry milk in TBST. | Detection: ECL Basic Kit . | Exposure time: 90s.