

## Product datasheet for **TA375128S**

### CSDE1 Rabbit Polyclonal Antibody

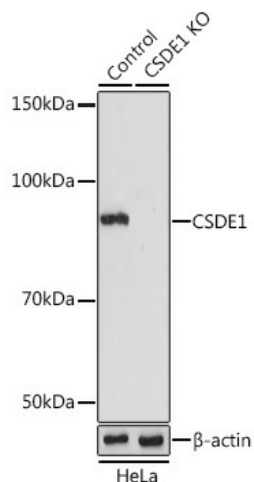
#### Product data:

Product Type:	Primary Antibodies
Applications:	ELISA, ICC/IF, IP, WB
Recommended Dilution:	WB, 1:500 - 1:1000 IF/ICC, 1:50 - 1:200 IP, 0.5µg-4µg antibody for 200µg-400µg extracts of whole cells ELISA, Recommended starting concentration is 1 µg/mL. Please optimize the concentration based on your specific assay requirements.
Reactivity:	Human, Mouse
Modifications:	Unmodified
Host:	Rabbit
Isotype:	IgG
Clonality:	Polyclonal
Formulation:	Buffer: PBS with 0.02% sodium azide, 50% glycerol, pH7.3.
Concentration:	lot specific
Purification:	Affinity purification
Conjugation:	Unconjugated
Storage:	Store at -20°C. Avoid freeze / thaw cycles.
Stability:	Shelf life: one year from despatch.
Predicted Protein Size:	89kDa
Gene Name:	cold shock domain containing E1
Database Link:	<a href="#">Entrez Gene 7812 Human</a> <a href="#">Q75534</a>
Background:	Enables RNA stem-loop binding activity. Involved in IRES-dependent viral translational initiation; nuclear-transcribed mRNA catabolic process, no-go decay; and stress granule assembly. Located in Golgi apparatus; cytosol; and plasma membrane. Part of CRD-mediated mRNA stability complex.
Synonyms:	D1S155E; DKFZp779B0247; DKFZp779J1455; FLJ26882; KIAA0885; NRAS-related; NRU; OTTHUMP00000013882; OTTHUMP00000013883; RP5-1000E10.3; UNR

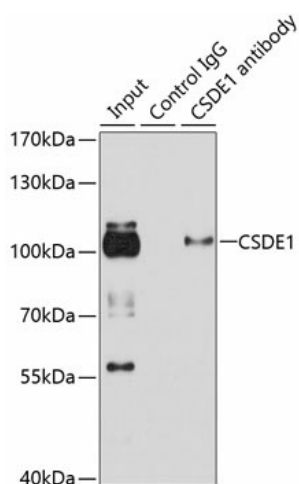


[View online »](#)

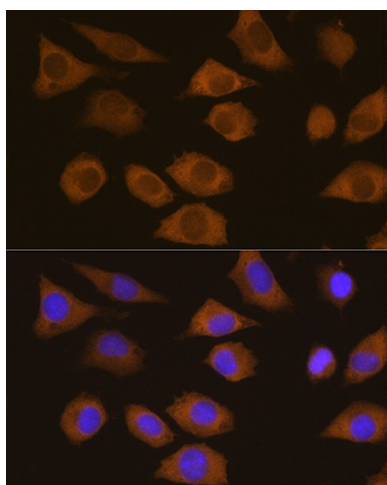
## Product images:



Western blot analysis of lysates from wild type (WT) and CSDE1 knockout (KO) HeLa cells



Immunoprecipitation analysis of 100  $\mu$ g extracts of HeLa cells using 3  $\mu$ g CSDE1 antibody ([TA375128]). Western blot was performed from the immunoprecipitate using CSDE1 antibody ([TA375128]) at a dilution of 1:1000.



Immunofluorescence analysis of L929 cells using CSDE1 Rabbit pAb ([TA375128]) at dilution of 1:100. Secondary antibody: Cy3-conjugated Goat anti-Rabbit IgG (H+L) (AS007) at 1:500 dilution. Blue: DAPI for nuclear staining.