

Product datasheet for **TA375128**

CSDE1 Rabbit Polyclonal Antibody

Product data:

Product Type:	Primary Antibodies
Applications:	ICC/IF, IP, WB
Recommended Dilution:	WB,1:500 - 1:2000 IF,1:50 - 1:200 IP,1:20 - 1:50
Reactivity:	Human, Mouse
Modifications:	Unmodified
Host:	Rabbit
Isotype:	IgG
Clonality:	Polyclonal
Immunogen:	Recombinant fusion protein containing a sequence corresponding to amino acids 369-600 of human CSDE1 (NP_009089.4).
Formulation:	Buffer: PBS with 0.02% sodium azide,50% glycerol,pH7.3.
Concentration:	lot specific
Purification:	Affinity purification
Conjugation:	Unconjugated
Storage:	Store at -20°C. Avoid freeze / thaw cycles.
Stability:	Shelf life: one year from despatch.
Predicted Protein Size:	85kDa/88kDa/90kDa/93kDa
Gene Name:	cold shock domain containing E1
Database Link:	Entrez Gene 7812 Human O75534
Background:	RNA-binding protein involved in translationally coupled mRNA turnover. Implicated with other RNA-binding proteins in the cytoplasmic deadenylation/translational and decay interplay of the FOS mRNA mediated by the major coding-region determinant of instability (mCRD domain. Required for efficient formation of stress granules.

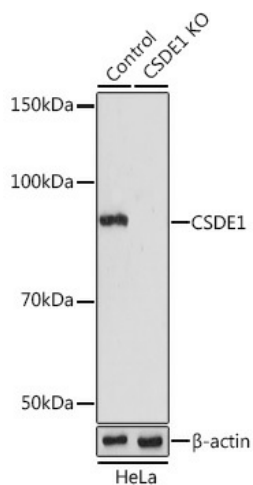


[View online »](#)

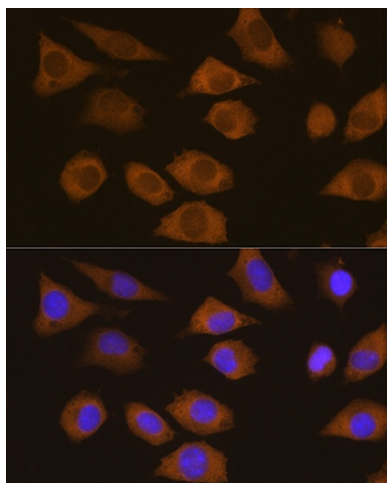
Synonyms:

D1S155E; DKFZp779B0247; DKFZp779J1455; FLJ26882; KIAA0885; NRAS-related; NRU; OTTHUMP00000013882; OTTHUMP00000013883; RP5-1000E10.3; UNR

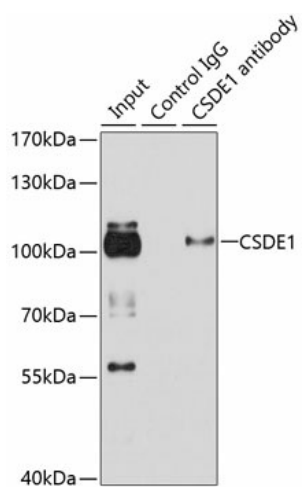
Product images:



Western blot analysis of extracts from normal (control) and CSDE1 knockout (KO) HeLa cells, using CSDE1 antibody (TA375128) at 1:1000 dilution. | Secondary antibody: HRP Goat Anti-Rabbit IgG (H+L) at 1:10000 dilution. | Lysates/proteins: 25ug per lane. | Blocking buffer: 3% nonfat dry milk in TBST. | Detection: ECL Basic Kit . | Exposure time: 15s.



Immunofluorescence analysis of L929 cells using CSDE1 Rabbit pAb (TA375128) at dilution of 1:100. Blue: DAPI for nuclear staining.



Immunoprecipitation analysis of 100ug extracts of HeLa cells using 3ug CSDE1 antibody (TA375128). Western blot was performed from the immunoprecipitate using CSDE1 antibody (TA375128) at a dilution of 1:1000.