

Product datasheet for TA375105S

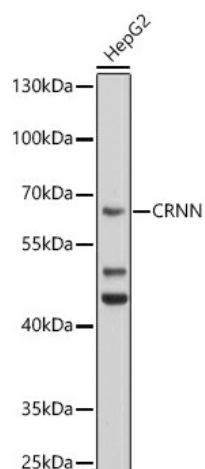
Cornulin (CRNN) Rabbit Polyclonal Antibody

Product data:

Product Type:	Primary Antibodies
Applications:	ELISA, WB
Recommended Dilution:	WB, 1:500 - 1:1000 ELISA, Recommended starting concentration is 1 µg/mL. Please optimize the concentration based on your specific assay requirements.
Reactivity:	Human, Mouse
Modifications:	Unmodified
Host:	Rabbit
Isotype:	IgG
Clonality:	Polyclonal
Formulation:	Buffer: PBS with 0.02% sodium azide, 50% glycerol, pH 7.3.
Concentration:	lot specific
Purification:	Affinity purification
Conjugation:	Unconjugated
Storage:	Store at -20°C. Avoid freeze / thaw cycles.
Stability:	Shelf life: one year from despatch.
Predicted Protein Size:	54kDa
Gene Name:	cornulin
Database Link:	Entrez Gene 49860 Human Q9UBG3
Background:	This gene encodes a member of the "fused gene" family of proteins, which contain N-terminus EF-hand domains and multiple tandem peptide repeats. The encoded protein contains two EF-hand Ca ²⁺ binding domains in its N-terminus and two glutamine- and threonine-rich 60 amino acid repeats in its C-terminus. This gene, also known as squamous epithelial heat shock protein 53, may play a role in the mucosal/epithelial immune response and epidermal differentiation.
Synonyms:	C1orf10; cornulin; DRC1; PDRC1; SEP53


[View online »](#)

Product images:



Western blot analysis of lysates from HepG2 cells