

Product datasheet for **TA375095**

CRISP2 Rabbit Polyclonal Antibody

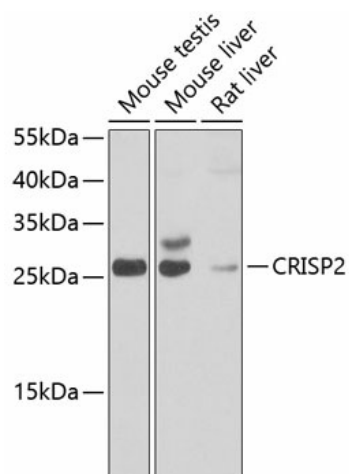
Product data:

Product Type:	Primary Antibodies
Applications:	WB
Recommended Dilution:	WB,1:500 - 1:2000
Reactivity:	Mouse, Rat
Modifications:	Unmodified
Host:	Rabbit
Isotype:	IgG
Clonality:	Polyclonal
Immunogen:	Recombinant fusion protein containing a sequence corresponding to amino acids 22-243 of human CRISP2 (NP_003287.1).
Formulation:	Buffer: PBS with 0.02% sodium azide,50% glycerol,pH7.3.
Concentration:	lot specific
Purification:	Affinity purification
Conjugation:	Unconjugated
Storage:	Store at -20°C. Avoid freeze / thaw cycles.
Stability:	Shelf life: one year from despatch.
Predicted Protein Size:	27kDa/31kDa
Gene Name:	cysteine rich secretory protein 2
Database Link:	P16562
Background:	May regulate some ion channels' activity and thereby regulate calcium fluxes during sperm capacitation.
Synonyms:	CRISP-2; CT36; GAPDL5; MGC111136; OTTHUMP00000016589; TPX1; TSP1



[View online »](#)

Product images:



Western blot analysis of extracts of various cell lines, using CRISP2 antibody (TA375095) at 1:1000 dilution. | Secondary antibody: HRP Goat Anti-Rabbit IgG (H+L) at 1:10000 dilution. | Lysates/proteins: 25ug per lane. | Blocking buffer: 3% nonfat dry milk in TBST. | Detection: ECL Enhanced Kit. | Exposure time: 5s.