

Product datasheet for **TA375092**

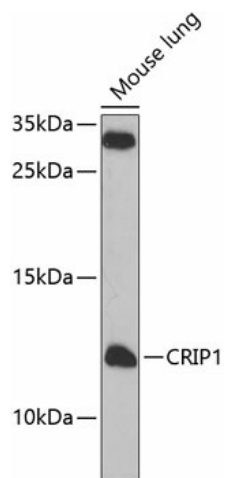
CRIP1 Rabbit Polyclonal Antibody

Product data:

Product Type:	Primary Antibodies
Applications:	WB
Recommended Dilution:	WB,1:500 - 1:2000
Reactivity:	Human, Mouse
Modifications:	Unmodified
Host:	Rabbit
Isotype:	IgG
Clonality:	Polyclonal
Immunogen:	Recombinant fusion protein containing a sequence corresponding to amino acids 1-77 of human CRIP1 (NP_001302.1).
Formulation:	Buffer: PBS with 0.02% sodium azide,50% glycerol,pH7.3.
Concentration:	lot specific
Purification:	Affinity purification
Conjugation:	Unconjugated
Storage:	Store at -20°C. Avoid freeze / thaw cycles.
Stability:	Shelf life: one year from despatch.
Predicted Protein Size:	8kDa
Gene Name:	cysteine rich protein 1
Database Link:	Entrez Gene 1396 Human P50238
Background:	Cysteine-rich intestinal protein (CRIP) belongs to the LIM/double zinc finger protein family, members of which include cysteine- and glycine-rich protein-1 (CSR1; MIM 123876), rhombotin-1 (RBTN1; MIM 186921), rhombotin-2 (RBTN2; MIM 180385), and rhombotin-3 (RBTN3; MIM 180386). CRIP may be involved in intestinal zinc transport (Hempe and Cousins, 1991 [PubMed 1946385]).[supplied by OMIM, Mar 2008]
Synonyms:	CRHP; CRIP; CRP1; FLJ40971; hCRHP; OTTHUMP00000205799



[View online »](#)

Product images:

Western blot analysis of extracts of mouse lung, using CRIP1 antibody (TA375092) at 1:1000 dilution. Secondary antibody: HRP Goat Anti-Rabbit IgG (H+L) at 1:10000 dilution. Lysates/proteins: 25ug per lane. Blocking buffer: 3% nonfat dry milk in TBST. Detection: ECL Enhanced Kit. Exposure time: 5s.