

Product datasheet for **TA375082S**

Crebbp Rabbit Polyclonal Antibody

Product data:

Product Type:	Primary Antibodies
Applications:	ELISA, WB
Recommended Dilution:	WB, 1:500 - 1:2000 ELISA, Recommended starting concentration is 1 µg/mL. Please optimize the concentration based on your specific assay requirements.
Reactivity:	Human, Mouse, Rat
Host:	Rabbit
Isotype:	IgG
Clonality:	Polyclonal
Formulation:	Buffer: PBS with 0.02% sodium azide, 50% glycerol, pH 7.3.
Concentration:	lot specific
Purification:	Affinity purification
Conjugation:	Unconjugated
Storage:	Store at -20°C. Avoid freeze / thaw cycles.
Stability:	Shelf life: one year from despatch.
Predicted Protein Size:	172kDa
Gene Name:	CREB binding protein
Database Link:	Entrez Gene 12914 Mouse Q6GQV9



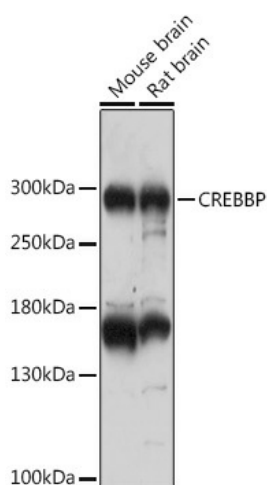
[View online »](#)

Background:

Enables several functions, including DNA-binding transcription factor binding activity; TFIIIB-class transcription factor binding activity; and disordered domain specific binding activity. Involved in several processes, including cellular response to virus; face morphogenesis; and negative regulation of interferon-beta production. Acts upstream of or within cellular response to hepatocyte growth factor stimulus; germ-line stem cell population maintenance; and regulation of gene expression. Located in chromatin and nucleus. Part of RNA polymerase II transcription regulator complex; histone acetyltransferase complex; and outer kinetochore. Is expressed in several structures, including alimentary system; embryo ectoderm; genitourinary system; heart; and skin. Used to study Rubinstein-Taybi syndrome; acute myeloid leukemia; autism spectrum disorder; and myelodysplastic syndrome. Human ortholog(s) of this gene implicated in Rubinstein-Taybi syndrome; acute lymphoblastic leukemia; and acute myeloid leukemia. Orthologous to human CREBBP (CREB binding protein).

Synonyms:

CBP; KAT3A; RSTS; RTS

Product images:


Western blot analysis of various lysates using CREBBP Rabbit pAb (TA375082) at 1:3000 dilution.

Secondary antibody: HRP-conjugated Goat anti-Rabbit IgG (H+L) (AS014) at 1:10000 dilution.

Lysates/proteins: 25µg per lane.

Blocking buffer: 3% nonfat dry milk in TBST.

Detection: ECL Basic Kit (RM00020).

Exposure time: 30s.