

Product datasheet for **TA375076S**

CREB3 Rabbit Polyclonal Antibody

Product data:

| | |
|-------------------------|---|
| Product Type: | Primary Antibodies |
| Applications: | ICC/IF, WB |
| Recommended Dilution: | WB,1:500 - 1:2000 IF,1:10 - 1:100 |
| Reactivity: | Human, Mouse, Rat |
| Modifications: | Unmodified |
| Host: | Rabbit |
| Isotype: | IgG |
| Clonality: | Polyclonal |
| Immunogen: | Recombinant fusion protein containing a sequence corresponding to amino acids 1-230 of human CREB3 (NP_006359.3). |
| Formulation: | PBS with 0.05% proclin300,50% glycerol,pH7.3. |
| Concentration: | lot specific |
| Purification: | Affinity purification |
| Conjugation: | Unconjugated |
| Storage: | Store at -20°C. Avoid freeze / thaw cycles. |
| Stability: | Shelf life: one year from despatch. |
| Predicted Protein Size: | 39kDa/41kDa/43kDa |
| Gene Name: | cAMP responsive element binding protein 3 |
| Database Link: | Entrez Gene 10488 Human O43889 |



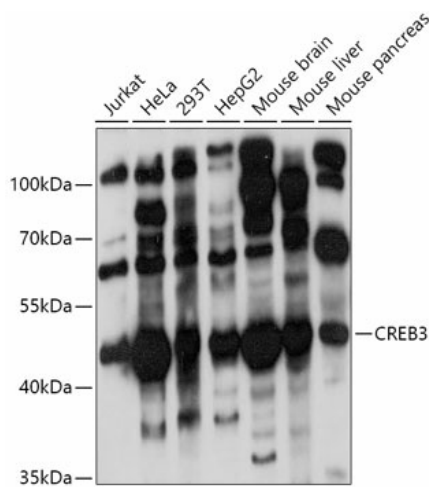
[View online »](#)

Background:

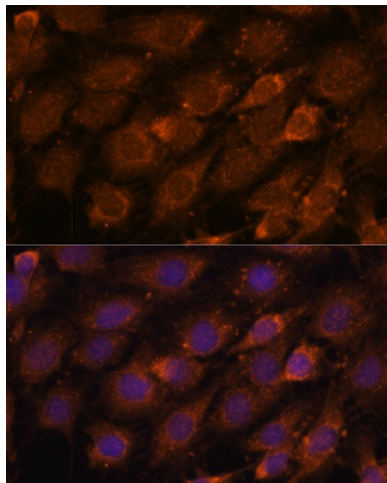
This gene encodes a transcription factor that is a member of the leucine zipper family of DNA binding proteins. This protein binds to the cAMP-response element and regulates cell proliferation. The protein interacts with host cell factor C1, which also associates with the herpes simplex virus (HSV) protein VP16 that induces transcription of HSV immediate-early genes. This protein and VP16 both bind to the same site on host cell factor C1. It is thought that the interaction between this protein and host cell factor C1 plays a role in the establishment of latency during HSV infection. This protein also plays a role in leukocyte migration, tumor suppression, and endoplasmic reticulum stress-associated protein degradation. Additional transcript variants have been identified, but their biological validity has not been determined.

Synonyms:

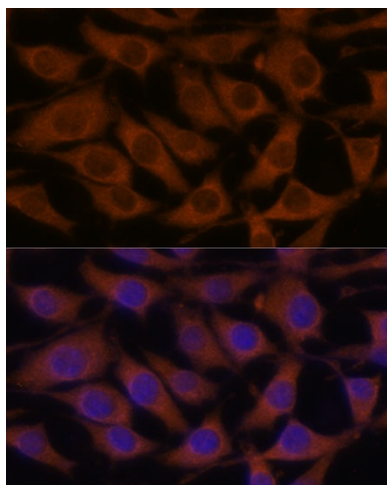
CREB-3; LUMAN; LZIP; MGC15333; MGC19782

Product images:


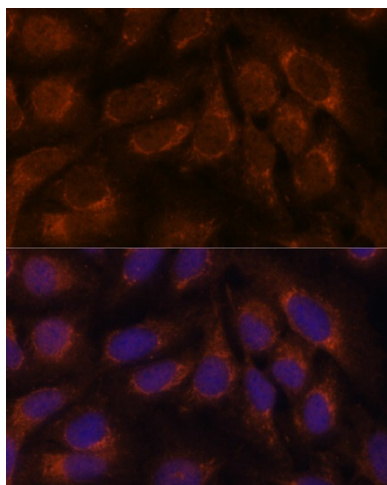
Western blot analysis of extracts of various cell lines, using CREB3 antibody ([TA375076]) at 1:1000 dilution. | Secondary antibody: HRP Goat Anti-Rabbit IgG (H+L) at 1:10000 dilution. | Lysates/proteins: 25ug per lane. | Blocking buffer: 3% nonfat dry milk in TBST. | Detection: ECL Basic Kit . | Exposure time: 1s.



Immunofluorescence analysis of C6 cells using CREB3 antibody ([TA375076]) at dilution of 1:100. Blue: DAPI for nuclear staining.



Immunofluorescence analysis of L929 cells using CREB3 antibody ([TA375076]) at dilution of 1:100. Blue: DAPI for nuclear staining.



Immunofluorescence analysis of U-2 OS cells using CREB3 antibody ([TA375076]) at dilution of 1:100. Blue: DAPI for nuclear staining.