

Product datasheet for **TA375075S**

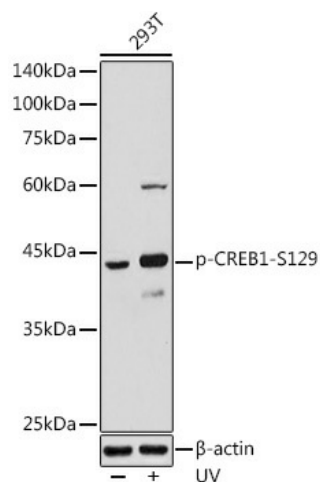
CREB1 Rabbit Polyclonal Antibody

Product data:

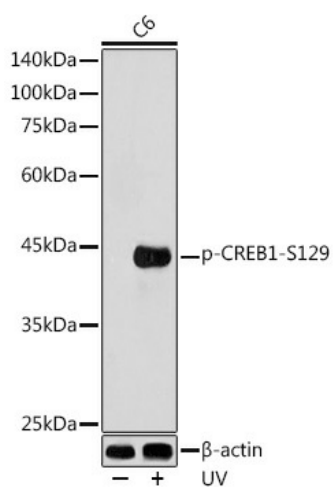
Product Type:	Primary Antibodies
Applications:	WB
Recommended Dilution:	WB,1:500 - 1:1000
Reactivity:	Human, Mouse, Rat
Modifications:	Phospho S129
Host:	Rabbit
Isotype:	IgG
Clonality:	Polyclonal
Immunogen:	A phospho specific peptide corresponding to residues surrounding S129 of human CREB1
Formulation:	Buffer: PBS with 0.02% sodium azide,50% glycerol,pH7.3.
Concentration:	lot specific
Purification:	Affinity purification
Conjugation:	Unconjugated
Storage:	Store at -20°C. Avoid freeze / thaw cycles.
Stability:	Shelf life: one year from despatch.
Predicted Protein Size:	25kDa/35kDa/36kDa
Gene Name:	cAMP responsive element binding protein 1
Database Link:	Entrez Gene 1385 Human P16220
Background:	This gene encodes a transcription factor that is a member of the leucine zipper family of DNA binding proteins. This protein binds as a homodimer to the cAMP-responsive element, an octameric palindrome. The protein is phosphorylated by several protein kinases, and induces transcription of genes in response to hormonal stimulation of the cAMP pathway. Alternate splicing of this gene results in several transcript variants encoding different isoforms.
Synonyms:	CREB; CREB-1; MGC9284; OTTHUMP00000206660



[View online »](#)

Product images:


Western blot analysis of extracts of 293T cells, using Phospho-CREB1-S129 antibody ([TA375075]) at 1:500 dilution. 293T cells were treated by UV at room temperature for 15-30 minutes. | Secondary antibody: HRP Goat Anti-Rabbit IgG (H+L) at 1:10000 dilution. | Lysates/proteins: 25ug per lane. | Blocking buffer: 3% nonfat dry milk in TBST. | Detection: ECL Basic Kit. | Exposure time: 30s.



Western blot analysis of extracts of C6 cells, using Phospho-CREB1-S129 antibody ([TA375075]) at 1:500 dilution. C6 cells were treated by UV at room temperature for 15-30 minutes. | Secondary antibody: HRP Goat Anti-Rabbit IgG (H+L) at 1:10000 dilution. | Lysates/proteins: 25ug per lane. | Blocking buffer: 3% nonfat dry milk in TBST. | Detection: ECL Basic Kit. | Exposure time: 180s.