

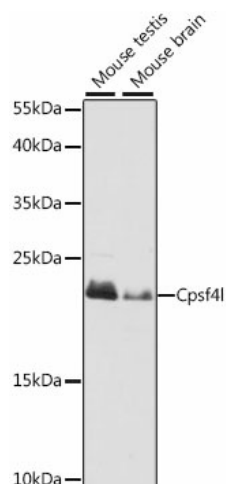
Product datasheet for TA375052S

Cpsf4l Rabbit Polyclonal Antibody

Product data:

Product Type:	Primary Antibodies
Applications:	ELISA, WB
Recommended Dilution:	WB, 1:500 - 1:2000 ELISA, Recommended starting concentration is 1 µg/mL. Please optimize the concentration based on your specific assay requirements.
Reactivity:	Mouse
Modifications:	Unmodified
Host:	Rabbit
Isotype:	IgG
Clonality:	Polyclonal
Formulation:	Buffer: PBS with 0.02% sodium azide, 50% glycerol, pH 7.3.
Concentration:	lot specific
Purification:	Affinity purification
Conjugation:	Unconjugated
Storage:	Store at -20°C. Avoid freeze / thaw cycles.
Stability:	Shelf life: one year from despatch.
Predicted Protein Size:	21kDa
Gene Name:	cleavage and polyadenylation specific factor 4-like
Database Link:	Entrez Gene 52670 Mouse A6NMK7
Background:	Predicted to be involved in pre-mRNA cleavage required for polyadenylation. Predicted to be part of mRNA cleavage and polyadenylation specificity factor complex. Is expressed in central nervous system and retina. Orthologous to human CPSF4L (cleavage and polyadenylation specific factor 4 like).
Synonyms:	Cpsf4l


[View online »](#)

Product images:

Western blot analysis of various lysates using Cpsf4l Rabbit pAb ([TA375052]) at 1:1000 dilution. Secondary antibody: HRP-conjugated Goat anti-Rabbit IgG (H+L) (AS014) at 1:10000 dilution. Lysates/proteins: 25µg per lane. Blocking buffer: 3% nonfat dry milk in TBST. Detection: ECL Basic Kit (RM00020). Exposure time: 10s.