

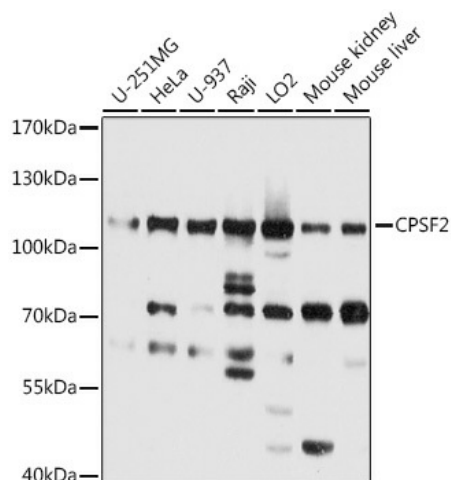
Product datasheet for **TA375048S**

CPSF2 Rabbit Polyclonal Antibody

Product data:

Product Type:	Primary Antibodies
Applications:	ELISA, WB
Recommended Dilution:	WB, 1:1000 - 1:2000 ELISA, Recommended starting concentration is 1 µg/mL. Please optimize the concentration based on your specific assay requirements.
Reactivity:	Human, Mouse, Rat
Modifications:	Unmodified
Host:	Rabbit
Isotype:	IgG
Clonality:	Polyclonal
Formulation:	Buffer: PBS with 0.02% sodium azide, 50% glycerol, pH 7.3.
Concentration:	lot specific
Purification:	Affinity purification
Conjugation:	Unconjugated
Storage:	Store at -20°C. Avoid freeze / thaw cycles.
Stability:	Shelf life: one year from despatch.
Predicted Protein Size:	88kDa
Gene Name:	cleavage and polyadenylation specific factor 2
Database Link:	Entrez Gene 53981 Human Q9P2I0
Background:	Predicted to enable RNA binding activity. Involved in mRNA 3'-end processing by stem-loop binding activity and cleavage. Located in membrane. Part of mRNA cleavage and polyadenylation specificity factor complex.
Synonyms:	CPSF100; KIAA1367

[View online »](#)

Product images:


Western blot analysis of various lysates using CPSF2 Rabbit pAb (TA375048) at 1:2000 dilution. Secondary antibody: HRP-conjugated Goat anti-Rabbit IgG (H+L) (AS014) at 1:10000 dilution. Lysates/proteins: 25µg per lane. Blocking buffer: 3% nonfat dry milk in TBST. Detection: ECL Basic Kit (RM00020). Exposure time: 3s.