

Product datasheet for **TA375048**

CPSF2 Rabbit Polyclonal Antibody

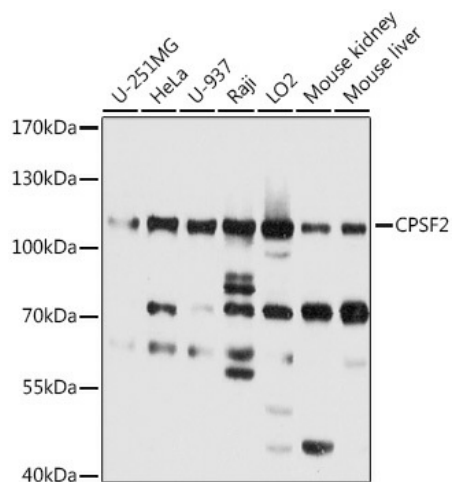
Product data:

Product Type:	Primary Antibodies
Applications:	WB
Recommended Dilution:	WB,1:1000 - 1:2000
Reactivity:	Human, Mouse, Rat
Modifications:	Unmodified
Host:	Rabbit
Isotype:	IgG
Clonality:	Polyclonal
Immunogen:	Recombinant fusion protein containing a sequence corresponding to amino acids 450-700 of human CPSF2 (NP_059133.1).
Formulation:	Buffer: PBS with 0.02% sodium azide,50% glycerol,pH7.3.
Concentration:	lot specific
Purification:	Affinity purification
Conjugation:	Unconjugated
Storage:	Store at -20°C. Avoid freeze / thaw cycles.
Stability:	Shelf life: one year from despatch.
Predicted Protein Size:	88kDa
Gene Name:	cleavage and polyadenylation specific factor 2
Database Link:	Entrez Gene 53981 Human Q9P2I0
Background:	Component of the cleavage and polyadenylation specificity factor (CPSF complex that play a key role in pre-mRNA 3'-end formation, recognizing the AAUAAA signal sequence and interacting with poly(A polymerase and other factors to bring about cleavage and poly(A addition. Involved in the histone 3' end pre-mRNA processing.
Synonyms:	CPSF100; KIAA1367



[View online »](#)

Product images:



Western blot analysis of extracts of various cell lines, using CPSF2 antibody (TA375048) at 1:2000 dilution. | Secondary antibody: HRP Goat Anti-Rabbit IgG (H+L) at 1:10000 dilution. | Lysates/proteins: 25ug per lane. | Blocking buffer: 3% nonfat dry milk in TBST. | Detection: ECL Basic Kit . | Exposure time: 3s.