

Product datasheet for **TA375025**

CPA3 Rabbit Polyclonal Antibody

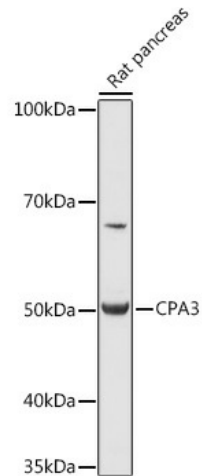
Product data:

Product Type:	Primary Antibodies
Applications:	WB
Recommended Dilution:	WB,1:500 - 1:2000
Reactivity:	Mouse, Rat
Modifications:	Unmodified
Host:	Rabbit
Isotype:	IgG
Clonality:	Polyclonal
Immunogen:	Recombinant fusion protein containing a sequence corresponding to amino acids 110-417 of human CPA3 (NP_001861.2).
Formulation:	Buffer: PBS with 0.02% sodium azide,50% glycerol,pH7.3.
Concentration:	lot specific
Purification:	Affinity purification
Conjugation:	Unconjugated
Storage:	Store at -20°C. Avoid freeze / thaw cycles.
Stability:	Shelf life: one year from despatch.
Predicted Protein Size:	48kDa
Gene Name:	carboxypeptidase A3
Database Link:	P15088
Background:	This gene encodes a member of the carboxypeptidase A family of zinc metalloproteases. The encoded preproprotein is proteolytically processed to generate a mature protease that is released by mast cells and may be involved in the degradation of endogenous proteins and the inactivation of venom-associated peptides. Expression of this gene may be elevated in human asthma patients.
Synonyms:	MC-CPA

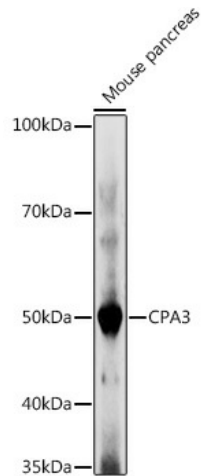


[View online »](#)

Product images:



Western blot analysis of extracts of Rat pancreas, using CPA3 antibody (TA375025) at 1:1000 dilution. | Secondary antibody: HRP Goat Anti-Rabbit IgG (H+L) at 1:10000 dilution. | Lysates/proteins: 25ug per lane. | Blocking buffer: 3% nonfat dry milk in TBST. | Detection: ECL Basic Kit . | Exposure time: 1s.



Western blot analysis of extracts of Mouse pancreas, using CPA3 antibody (TA375025) at 1:1000 dilution. | Secondary antibody: HRP Goat Anti-Rabbit IgG (H+L) at 1:10000 dilution. | Lysates/proteins: 25ug per lane. | Blocking buffer: 3% nonfat dry milk in TBST. | Detection: ECL Basic Kit . | Exposure time: 180s.