

Product datasheet for **TA374980**

COMMD5 Rabbit Polyclonal Antibody

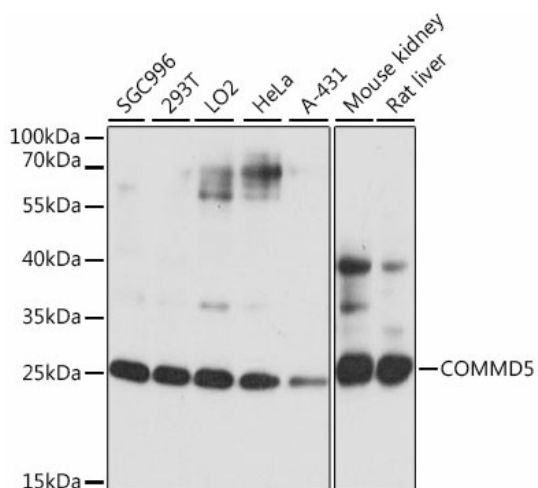
Product data:

Product Type:	Primary Antibodies
Applications:	ICC/IF, WB
Recommended Dilution:	WB,1:500 - 1:2000 IF,1:50 - 1:200
Reactivity:	Human, Mouse, Rat
Modifications:	Unmodified
Host:	Rabbit
Isotype:	IgG
Clonality:	Polyclonal
Immunogen:	Recombinant fusion protein containing a sequence corresponding to amino acids 1-224 of human COMMD5 (NP_054785.2).
Formulation:	Buffer: PBS with 0.02% sodium azide,50% glycerol,pH7.3.
Concentration:	lot specific
Purification:	Affinity purification
Conjugation:	Unconjugated
Storage:	Store at -20°C. Avoid freeze / thaw cycles.
Stability:	Shelf life: one year from despatch.
Predicted Protein Size:	24kDa
Gene Name:	COMM domain containing 5
Database Link:	Entrez Gene 28991 Human Q9GZQ3
Background:	May modulate activity of cullin-RING E3 ubiquitin ligase (CRL complexes. Negatively regulates cell proliferation. Negatively regulates cell cycle G2/M phase transition probably by transactivating p21/CDKN1A through the p53/TP53-independent signaling pathway. Involved in kidney proximal tubule morphogenesis (By similarity. Down-regulates activation of NF-kappa-B.
Synonyms:	FLJ13008; HCARG; HT002; MGC72046

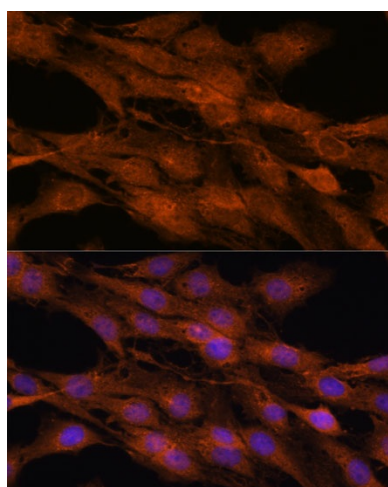


[View online »](#)

Product images:



Western blot analysis of extracts of various cell lines, using COMMD5 antibody (TA374980) at 1:1000 dilution. | Secondary antibody: HRP Goat Anti-Rabbit IgG (H+L) at 1:10000 dilution. | Lysates/proteins: 25ug per lane. | Blocking buffer: 3% nonfat dry milk in TBST. | Detection: ECL Basic Kit. | Exposure time: 1s.



Immunofluorescence analysis of C6 cells using COMMD5 antibody (TA374980) at dilution of 1:100. Blue: DAPI for nuclear staining.