

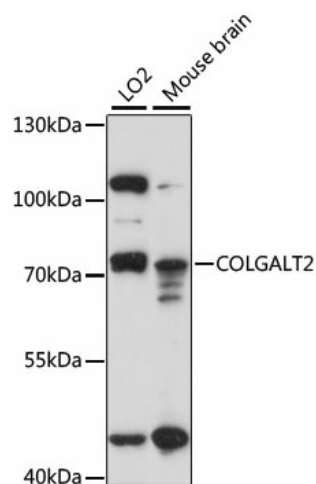
Product datasheet for **TA374978**

GLT25D2 (COLGALT2) Rabbit Polyclonal Antibody

Product data:

Product Type:	Primary Antibodies
Applications:	ELISA, WB
Recommended Dilution:	WB, 1:200 - 1:2000 ELISA, Recommended starting concentration is 1 µg/mL. Please optimize the concentration based on your specific assay requirements.
Reactivity:	Human, Mouse
Modifications:	Unmodified
Host:	Rabbit
Isotype:	IgG
Clonality:	Polyclonal
Formulation:	Buffer: PBS with 0.01% thimerosal, 50% glycerol, pH7.3.
Concentration:	lot specific
Purification:	Affinity purification
Conjugation:	Unconjugated
Storage:	Store at -20°C. Avoid freeze / thaw cycles.
Stability:	Shelf life: one year from despatch.
Predicted Protein Size:	73kDa
Gene Name:	collagen beta(1-O)galactosyltransferase 2
Database Link:	Entrez Gene 23127 Human Q8IYK4
Background:	Predicted to enable procollagen galactosyltransferase activity. Predicted to be involved in collagen fibril organization. Predicted to be located in endoplasmic reticulum lumen.
Synonyms:	C1orf17; GLT25D2

[View online »](#)

Product images:


Western blot analysis of various lysates using COLGALT2 Rabbit pAb (TA374978) at 1:1000 dilution.

Secondary antibody: HRP-conjugated Goat anti-Rabbit IgG (H+L) (AS014) at 1:10000 dilution.

Lysates/proteins: 25µg per lane.

Blocking buffer: 3% nonfat dry milk in TBST.

Detection: ECL Basic Kit (RM00020).

Exposure time: 30s.