

## Product datasheet for **TA374969**

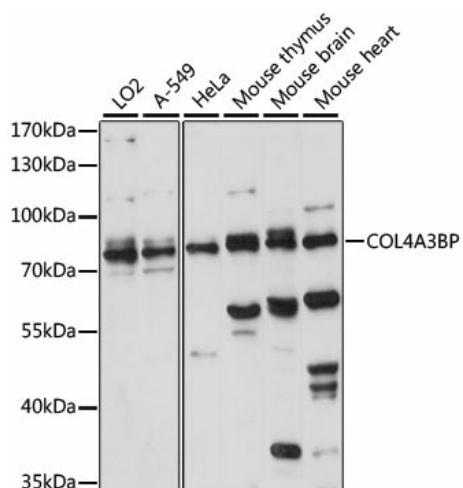
### CERT1 Rabbit Polyclonal Antibody

#### Product data:

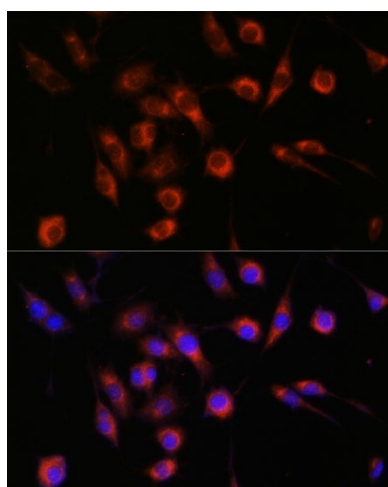
Product Type:	Primary Antibodies
Applications:	ICC/IF, WB
Recommended Dilution:	WB,1:200 - 1:2000 IF,1:50 - 1:200
Reactivity:	Human, Mouse, Rat
Modifications:	Unmodified
Host:	Rabbit
Isotype:	IgG
Clonality:	Polyclonal
Immunogen:	Recombinant fusion protein containing a sequence corresponding to amino acids 369-598 of human COL4A3BP (NP_112729.1).
Formulation:	Buffer: PBS with 0.02% sodium azide,50% glycerol,pH7.3.
Concentration:	lot specific
Purification:	Affinity purification
Conjugation:	Unconjugated
Storage:	Store at -20°C. Avoid freeze / thaw cycles.
Stability:	Shelf life: one year from despatch.
Predicted Protein Size:	68kDa/70kDa/83kDa
Gene Name:	collagen type IV alpha 3 binding protein
Database Link:	<a href="#">Entrez Gene 10087 Human Q9Y5P4</a>
Background:	This gene encodes a kinase that specifically phosphorylates the N-terminal region of the non-collagenous domain of the alpha 3 chain of type IV collagen, known as the Goodpasture antigen. Goodpasture disease is the result of an autoimmune response directed at this antigen. One isoform of this protein is also involved in ceramide intracellular transport. Three transcript variants encoding different isoforms have been found for this gene.
Synonyms:	CERT; CERTL; FLJ20597; GPBP; hCERT; OTTHUMP00000128248; STARD11



[View online »](#)

**Product images:**


Western blot analysis of extracts of various cell lines, using COL4A3BP antibody (TA374969) at 1:1000 dilution. | Secondary antibody: HRP Goat Anti-Rabbit IgG (H+L) at 1:10000 dilution. | Lysates/proteins: 25ug per lane. | Blocking buffer: 3% nonfat dry milk in TBST. | Detection: ECL Basic Kit . | Exposure time: 15s.



Immunofluorescence analysis of L929 cells using COL4A3BP antibody (TA374969) at dilution of 1:100. Blue: DAPI for nuclear staining.