

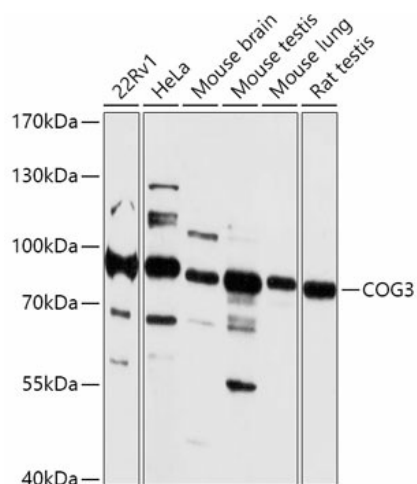
## Product datasheet for TA374950S

### COG3 Rabbit Polyclonal Antibody

#### Product data:

Product Type:	Primary Antibodies
Applications:	ELISA, WB
Recommended Dilution:	WB, 1:500 - 1:2000 ELISA, Recommended starting concentration is 1 µg/mL. Please optimize the concentration based on your specific assay requirements.
Reactivity:	Human, Mouse, Rat
Modifications:	Unmodified
Host:	Rabbit
Isotype:	IgG
Clonality:	Polyclonal
Formulation:	Buffer: PBS with 0.02% sodium azide, 50% glycerol, pH 7.3.
Concentration:	lot specific
Purification:	Affinity purification
Conjugation:	Unconjugated
Storage:	Store at -20°C. Avoid freeze / thaw cycles.
Stability:	Shelf life: one year from despatch.
Predicted Protein Size:	94kDa
Gene Name:	component of oligomeric golgi complex 3
Database Link:	<a href="#">Entrez Gene 83548 Human Q96JB2</a>
Background:	This gene encodes a component of the conserved oligomeric Golgi (COG) complex which is composed of eight different subunits and is required for normal Golgi morphology and localization. Defects in the COG complex result in multiple deficiencies in protein glycosylation. The protein encoded by this gene is involved in ER-Golgi transport.
Synonyms:	p94; SEC34


[View online »](#)

**Product images:**


Western blot analysis of various lysates using COG3 Rabbit pAb ([TA374950]) at 1:1000 dilution. Secondary antibody: HRP-conjugated Goat anti-Rabbit IgG (H+L) (AS014) at 1:10000 dilution. Lysates/proteins: 25µg per lane. Blocking buffer: 3% nonfat dry milk in TBST. Detection: ECL Basic Kit (RM00020). Exposure time: 90s.