

Product datasheet for TA374924S

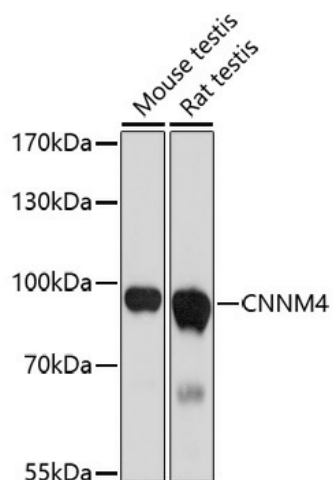
CNNM4 Rabbit Polyclonal Antibody

Product data:

Product Type:	Primary Antibodies
Applications:	ELISA, WB
Recommended Dilution:	WB, 1:100 - 1:500 ELISA, Recommended starting concentration is 1 µg/mL. Please optimize the concentration based on your specific assay requirements.
Reactivity:	Human, Mouse, Rat
Host:	Rabbit
Isotype:	IgG
Clonality:	Polyclonal
Formulation:	PBS with 0.05% proclin300, 50% glycerol, pH7.3.
Concentration:	lot specific
Purification:	Affinity purification
Conjugation:	Unconjugated
Storage:	Store at -20°C. Avoid freeze / thaw cycles.
Stability:	Shelf life: one year from despatch.
Predicted Protein Size:	87kDa
Gene Name:	cyclin and CBS domain divalent metal cation transport mediator 4
Database Link:	Entrez Gene 26504 Human Q6P4Q7
Background:	This gene encodes a member of the ancient conserved domain containing protein family. Members of this protein family contain a cyclin box motif and have structural similarity to the cyclins. The encoded protein may play a role in metal ion transport. Mutations in this gene are associated with Jalili syndrome which consists of cone-rod dystrophy and amelogenesis imperfecta.
Synonyms:	ACDP4; Cyclin-M4; FLJ42791; KIAA1592


[View online »](#)

Product images:



Western blot analysis of various lysates