

Product datasheet for **TA374924**

CNNM4 Rabbit Polyclonal Antibody

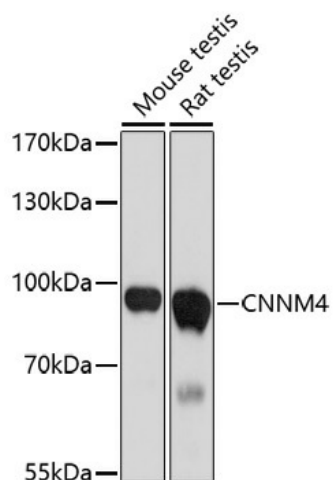
Product data:

Product Type:	Primary Antibodies
Applications:	WB
Recommended Dilution:	WB,1:500 - 1:2000 IF,1:50 - 1:100
Reactivity:	Human, Mouse, Rat
Host:	Rabbit
Isotype:	IgG
Clonality:	Polyclonal
Immunogen:	A synthetic peptide of human CNNM4.
Formulation:	Buffer: PBS with 0.02% sodium azide,50% glycerol,pH7.3.
Concentration:	lot specific
Purification:	Affinity purification
Conjugation:	Unconjugated
Storage:	Store at -20°C. Avoid freeze / thaw cycles.
Stability:	Shelf life: one year from despatch.
Gene Name:	cyclin and CBS domain divalent metal cation transport mediator 4
Database Link:	Entrez Gene 26504 Human Q6P4Q7
Background:	This gene encodes a member of the ancient conserved domain containing protein family. Members of this protein family contain a cyclin box motif and have structural similarity to the cyclins. The encoded protein may play a role in metal ion transport. Mutations in this gene are associated with Jalili syndrome which consists of cone-rod dystrophy and amelogenesis imperfecta.
Synonyms:	ACDP4; Cyclin-M4; FLJ42791; KIAA1592



[View online »](#)

Product images:



Western blot analysis of extracts of various cell lines, using CNNM4 antibody (TA374924) at 1:1000 dilution. | Secondary antibody: HRP Goat Anti-Rabbit IgG (H+L) at 1:10000 dilution. | Lysates/proteins: 25ug per lane. | Blocking buffer: 3% nonfat dry milk in TBST. | Detection: ECL Basic Kit . | Exposure time: 90s.