

## Product datasheet for **TA374916S**

### CNGA2 Rabbit Polyclonal Antibody

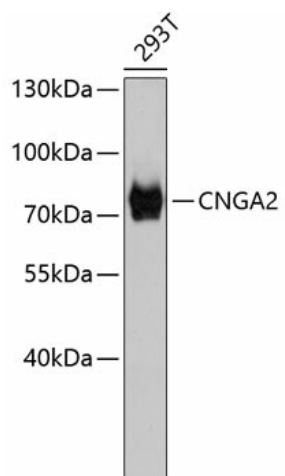
#### Product data:

Product Type:	Primary Antibodies
Applications:	ELISA, WB
Recommended Dilution:	WB, 1:500 - 1:1000 ELISA, Recommended starting concentration is 1 µg/mL. Please optimize the concentration based on your specific assay requirements.
Reactivity:	Human, Mouse, Rat
Modifications:	Unmodified
Host:	Rabbit
Isotype:	IgG
Clonality:	Polyclonal
Formulation:	Buffer: PBS with 0.02% sodium azide, 50% glycerol, pH 7.3.
Concentration:	lot specific
Purification:	Affinity purification
Conjugation:	Unconjugated
Storage:	Store at -20°C. Avoid freeze / thaw cycles.
Stability:	Shelf life: one year from despatch.
Predicted Protein Size:	76kDa
Gene Name:	cyclic nucleotide gated channel alpha 2
Database Link:	<a href="#">Entrez Gene 1260 Human Q16280</a>
Background:	The protein encoded by this gene represents the alpha subunit of a cyclic nucleotide-gated olfactory channel. The encoded protein contains a carboxy-terminal leucine zipper that mediates channel formation.
Synonyms:	CNCA; CNCA1; CNCG2; CNG-2; CNG2; FLJ46312; OCNC1; OCNCa; OCNCalpha

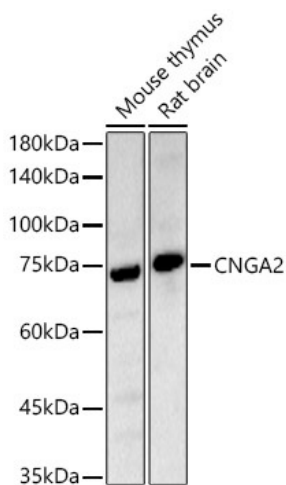


[View online »](#)

## Product images:



Western blot analysis of various lysates



Western blot analysis of various lysates