

Product datasheet for **TA374906S**

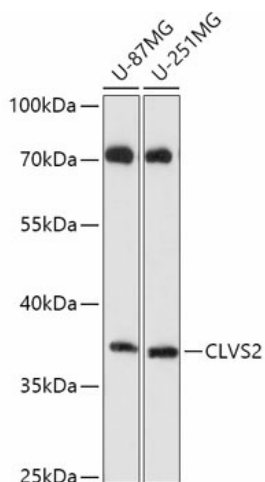
CLVS2 Rabbit Polyclonal Antibody

Product data:

Product Type:	Primary Antibodies
Applications:	ELISA, WB
Recommended Dilution:	WB, 1:500 - 1:2000 ELISA, Recommended starting concentration is 1 µg/mL. Please optimize the concentration based on your specific assay requirements.
Reactivity:	Human
Modifications:	Unmodified
Host:	Rabbit
Isotype:	IgG
Clonality:	Polyclonal
Formulation:	Buffer: PBS with 0.02% sodium azide, 50% glycerol, pH 7.3.
Concentration:	lot specific
Purification:	Affinity purification
Conjugation:	Unconjugated
Storage:	Store at -20°C. Avoid freeze / thaw cycles.
Stability:	Shelf life: one year from despatch.
Predicted Protein Size:	38kDa
Gene Name:	clavesin 2
Database Link:	Entrez Gene 134829 Human Q5SYC1
Background:	This gene encodes a protein that belongs to the SEC14/CRAL-TRIO family of proteins. A similar protein in rat is thought to function in the endosomal pathway between early endosomes and mature lysosomes.
Synonyms:	A330019N05Rik; Clavesin-2; RGD1306801; Rlbp1l2



[View online »](#)

Product images:


Western blot analysis of various lysates using CLVS2 Rabbit pAb ([TA374906]) at 1:1000 dilution. Secondary antibody: HRP-conjugated Goat anti-Rabbit IgG (H+L) (AS014) at 1:10000 dilution. Lysates/proteins: 25µg per lane. Blocking buffer: 3% nonfat dry milk in TBST. Detection: ECL Basic Kit (RM00020). Exposure time: 90s.