

Product datasheet for **TA374905**

KIAA0664 (CLUH) Rabbit Polyclonal Antibody

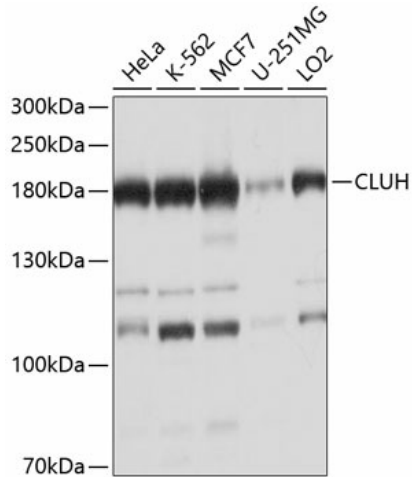
Product data:

Product Type:	Primary Antibodies
Applications:	ICC/IF, IHC, WB
Recommended Dilution:	WB,1:1000 - 1:4000 IHC,1:50 - 1:200 IF,1:50 - 1:200
Reactivity:	Human, Mouse
Modifications:	Unmodified
Host:	Rabbit
Isotype:	IgG
Clonality:	Polyclonal
Immunogen:	Recombinant fusion protein containing a sequence corresponding to amino acids 1120-1309 of human CLUH (NP_056044.3).
Formulation:	Buffer: PBS with 0.02% sodium azide,50% glycerol,pH7.3.
Concentration:	lot specific
Purification:	Affinity purification
Conjugation:	Unconjugated
Storage:	Store at -20°C. Avoid freeze / thaw cycles.
Stability:	Shelf life: one year from despatch.
Predicted Protein Size:	146kDa
Gene Name:	clustered mitochondria (cluA/CLU1) homolog
Database Link:	Entrez Gene 23277 Human O75153
Background:	mRNA-binding protein involved in proper cytoplasmic distribution of mitochondria. Specifically binds mRNAs of nuclear-encoded mitochondrial proteins in the cytoplasm and regulates transport or translation of these transcripts close to mitochondria, playing a role in mitochondrial biogenesis.
Synonyms:	1300001I01Rik; Kiaa0664; mKIAA0664; RP23-194P5.1

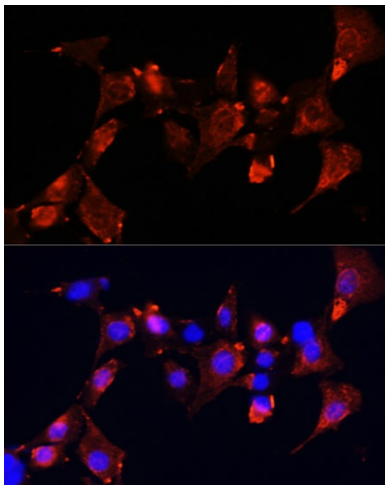


[View online »](#)

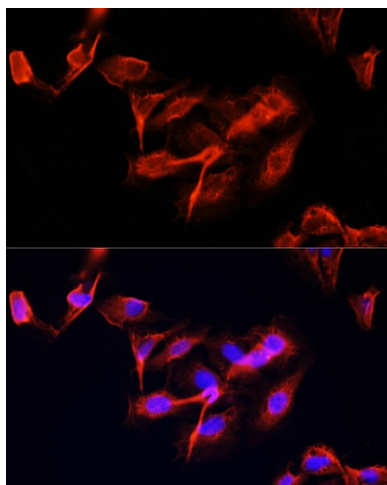
Product images:



Western blot analysis of extracts of various cell lines, using CLUH antibody (TA374905) at 1:1000 dilution. | Secondary antibody: HRP Goat Anti-Rabbit IgG (H+L) at 1:10000 dilution. | Lysates/proteins: 25ug per lane. | Blocking buffer: 3% nonfat dry milk in TBST. | Detection: ECL Basic Kit. | Exposure time: 15s.



Immunofluorescence analysis of NIH-3T3 cells using CLUH Polyclonal Antibody (TA374905) at dilution of 1:100 (40x lens). Blue: DAPI for nuclear staining.



Immunofluorescence analysis of U-2 OS cells using CLUH Polyclonal Antibody (TA374905) at dilution of 1:100 (40x lens). Blue: DAPI for nuclear staining.