

## Product datasheet for **TA374904**

### Clusterin (CLU) Rabbit Polyclonal Antibody

#### Product data:

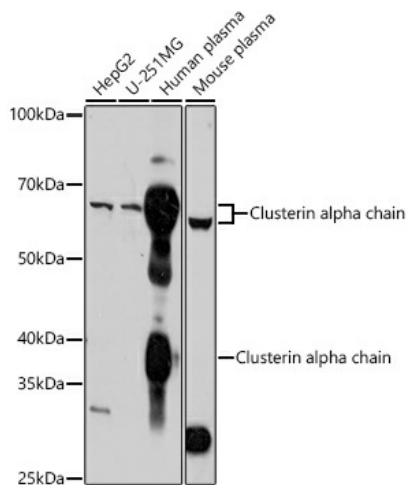
Product Type:	Primary Antibodies
Applications:	ICC/IF, IHC, WB
Recommended Dilution:	WB,1:500 - 1:2000 IHC,1:50 - 1:200 IF,1:50 - 1:200
Reactivity:	Human, Mouse, Rat
Modifications:	Unmodified
Host:	Rabbit
Isotype:	IgG
Clonality:	Polyclonal
Immunogen:	Recombinant fusion protein containing a sequence corresponding to amino acids 220-449 of human Clusterin alpha chain (NP_976084.1).
Formulation:	Buffer: PBS with 0.02% sodium azide,50% glycerol,pH7.3.
Concentration:	lot specific
Purification:	Affinity purification
Conjugation:	Unconjugated
Storage:	Store at -20°C. Avoid freeze / thaw cycles.
Stability:	Shelf life: one year from despatch.
Predicted Protein Size:	32kDa/48kDa/52kDa/53kDa/57kDa
Gene Name:	clusterin
Database Link:	<a href="#">Entrez Gene 1191 Human P10909</a>
Background:	The protein encoded by this gene is a secreted chaperone that can under some stress conditions also be found in the cell cytosol. It has been suggested to be involved in several basic biological events such as cell death, tumor progression, and neurodegenerative disorders. Alternate splicing results in both coding and non-coding variants.



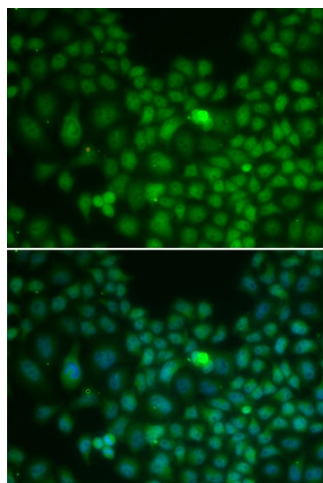
[View online »](#)

**Synonyms:** AAG4; Apo-J; APOJ; CLI; clusterin; KUB1; MGC24903; NA1/NA2; SGP-2; SGP2; SP-40; TRPM-2; TRPM2

**Product images:**



Western blot analysis of extracts of various cell lines, using Clusterin alpha chain antibody (TA374904) at 1:1000 dilution. | Secondary antibody: HRP Goat Anti-Rabbit IgG (H+L) at 1:10000 dilution. | Lysates/proteins: 25ug per lane. | Blocking buffer: 3% nonfat dry milk in TBST. | Detection: ECL Basic Kit . | Exposure time: 30s.



Immunofluorescence analysis of U2OS cells using Clusterin alpha chain antibody (TA374904). Blue: DAPI for nuclear staining.