

## Product datasheet for **TA374897S**

### CLSTN3 Rabbit Polyclonal Antibody

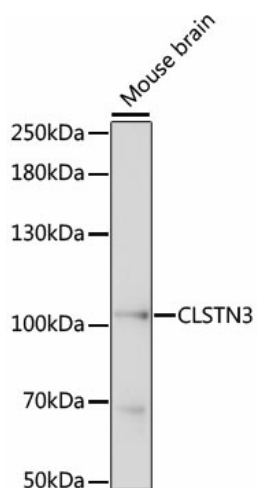
#### Product data:

Product Type:	Primary Antibodies
Applications:	ELISA, WB
Recommended Dilution:	WB, 1:500 - 1:2000 ELISA, Recommended starting concentration is 1 µg/mL. Please optimize the concentration based on your specific assay requirements.
Reactivity:	Mouse
Modifications:	Unmodified
Host:	Rabbit
Isotype:	IgG
Clonality:	Polyclonal
Formulation:	Buffer: PBS with 0.02% sodium azide, 50% glycerol, pH 7.3.
Concentration:	lot specific
Purification:	Affinity purification
Conjugation:	Unconjugated
Storage:	Store at -20°C. Avoid freeze / thaw cycles.
Stability:	Shelf life: one year from despatch.
Predicted Protein Size:	106kDa
Gene Name:	calsyntenin 3
Database Link:	<a href="#">Q9BQT9</a>
Background:	Predicted to enable calcium ion binding activity. Predicted to be involved in positive regulation of synapse assembly and positive regulation of synaptic transmission. Predicted to act upstream of or within several processes, including chemical synaptic transmission; positive regulation of protein localization to synapse; and synapse assembly. Predicted to be located in postsynaptic density. Predicted to be part of protein-containing complex. Predicted to be active in several cellular components, including GABA-ergic synapse; glutamatergic synapse; and postsynaptic membrane. Predicted to be integral component of postsynaptic density membrane.
Synonyms:	Alc-beta; Alcadin-beta; alcbeta; CS3; CSTN3; KIAA0726; MGC131797; MGC138488



[View online »](#)

## Product images:



Western blot analysis of lysates from mouse brain