

## Product datasheet for **TA374897**

### CLSTN3 Rabbit Polyclonal Antibody

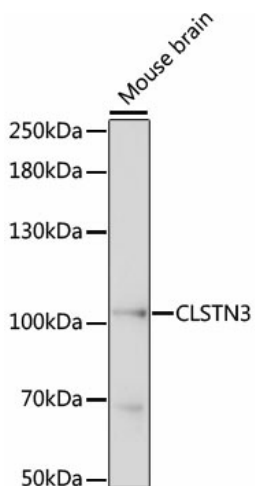
#### Product data:

Product Type:	Primary Antibodies
Applications:	WB
Recommended Dilution:	WB,1:500 - 1:2000
Reactivity:	Mouse
Modifications:	Unmodified
Host:	Rabbit
Isotype:	IgG
Clonality:	Polyclonal
Immunogen:	Recombinant fusion protein containing a sequence corresponding to amino acids 730-850 of human CLSTN3 (NP_055533.2).
Formulation:	Buffer: PBS with 0.02% sodium azide,50% glycerol,pH7.3.
Concentration:	lot specific
Purification:	Affinity purification
Conjugation:	Unconjugated
Storage:	Store at -20°C. Avoid freeze / thaw cycles.
Stability:	Shelf life: one year from despatch.
Predicted Protein Size:	106kDa/107kDa
Gene Name:	calsyntenin 3
Database Link:	<a href="#">Q9BQT9</a>
Background:	May modulate calcium-mediated postsynaptic signals. Complex formation with APBA2 and APP, stabilizes APP metabolism and enhances APBA2-mediated suppression of beta-APP40 secretion, due to the retardation of intracellular APP maturation.
Synonyms:	Alc-beta; Alcadein-beta; alcbeta; CS3; CSTN3; KIAA0726; MGC131797; MGC138488



[View online »](#)

## Product images:



Western blot analysis of extracts of mouse brain, using CLSTN3 antibody (TA374897) at 1:1000 dilution. | Secondary antibody: HRP Goat Anti-Rabbit IgG (H+L) at 1:10000 dilution. | Lysates/proteins: 25ug per lane. | Blocking buffer: 3% nonfat dry milk in TBST. | Detection: ECL Basic Kit . | Exposure time: 30s.