

## Product datasheet for **TA374896**

### CLSTN1 Rabbit Polyclonal Antibody

#### Product data:

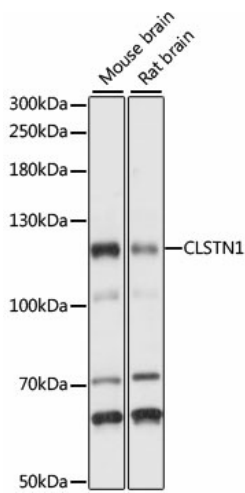
Product Type:	Primary Antibodies
Applications:	WB
Recommended Dilution:	WB, 1:200 - 1:2000 IF, 1:50 - 1:200
Reactivity:	Mouse, Rat
Modifications:	Unmodified
Host:	Rabbit
Isotype:	IgG
Clonality:	Polyclonal
Immunogen:	Recombinant fusion protein containing a sequence corresponding to amino acids 29-350 of human CLSTN1 (NP_055759.3).
Formulation:	Buffer: PBS with 0.02% sodium azide, 50% glycerol, pH 7.3.
Concentration:	lot specific
Purification:	Affinity purification
Conjugation:	Unconjugated
Storage:	Store at -20°C. Avoid freeze / thaw cycles.
Stability:	Shelf life: one year from despatch.
Predicted Protein Size:	108kDa/109kDa
Gene Name:	calsyntenin 1
Database Link:	<a href="#">O94985</a>
Background:	This gene is a member of the calsyntenin family, a subset of the cadherin superfamily. The encoded transmembrane protein, also known as alcadein-alpha, is thought to bind to kinesin-1 motors to mediate the axonal anterograde transport of certain types of vesicle. Amyloid precursor protein (APP) is trafficked via these vesicles and so this protein is being investigated to see how it might contribute to the mechanisms underlying Alzheimer's disease. Alternative splicing results in multiple transcript variants.



[View online »](#)

**Synonyms:** ALC-ALPHA; Alcadin-alpha; alalpha1; alalpha2; CS1; CSTN1; FLJ32258; KIAA0911; PIK3CD; XB31alpha

**Product images:**



Western blot analysis of extracts of various cell lines, using CLSTN1 antibody (TA374896) at 1:1000 dilution. | Secondary antibody: HRP Goat Anti-Rabbit IgG (H+L) at 1:10000 dilution. | Lysates/proteins: 25ug per lane. | Blocking buffer: 3% nonfat dry milk in TBST. | Detection: ECL Basic Kit . | Exposure time: 1s.