

Product datasheet for **TA374894S**

CLPTM1 Rabbit Polyclonal Antibody

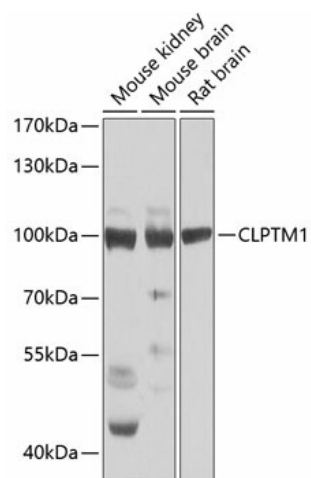
Product data:

Product Type:	Primary Antibodies
Applications:	ELISA, WB
Recommended Dilution:	WB,1:500 - 1:2000 ELISA,Recommended starting concentration is 1 µg/mL. Please optimize the concentration based on your specific assay requirements.
Reactivity:	Human, Mouse, Rat
Modifications:	Unmodified
Host:	Rabbit
Isotype:	IgG
Clonality:	Polyclonal
Formulation:	Buffer: PBS with 0.02% sodium azide,50% glycerol,pH7.3.
Concentration:	lot specific
Purification:	Affinity purification
Conjugation:	Unconjugated
Storage:	Store at -20°C. Avoid freeze / thaw cycles.
Stability:	Shelf life: one year from despatch.
Predicted Protein Size:	76kDa
Gene Name:	CLPTM1, transmembrane protein
Database Link:	Entrez Gene 1209 Human O96005
Background:	Predicted to be involved in regulation of T cell differentiation in thymus. Located in membrane.
Synonyms:	CLPTM1L; CRR9



[View online »](#)

Product images:



Western blot analysis of various lysates using CLPTM1 Rabbit pAb (TA374894) at 1:1000 dilution.

Secondary antibody: HRP-conjugated Goat anti-Rabbit IgG (H+L) (AS014) at 1:10000 dilution.

Lysates/proteins: 25 μ g per lane.

Blocking buffer: 3% nonfat dry milk in TBST.

Detection: ECL Basic Kit (RM00020).

Exposure time: 3s.