

Product datasheet for **TA374871S**

CD299 (CLEC4M) Rabbit Polyclonal Antibody

Product data:

Product Type:	Primary Antibodies
Applications:	ELISA, ICC/IF, WB
Recommended Dilution:	WB, 1:500 - 1:1000 IF/ICC, 1:50 - 1:200 ELISA, Recommended starting concentration is 1 µg/mL. Please optimize the concentration based on your specific assay requirements.
Reactivity:	Human, Mouse, Rat
Modifications:	Unmodified
Host:	Rabbit
Isotype:	IgG
Clonality:	Polyclonal
Formulation:	PBS with 0.05% proclin300, 50% glycerol, pH7.3.
Concentration:	lot specific
Purification:	Affinity purification
Conjugation:	Unconjugated
Storage:	Store at -20°C. Avoid freeze / thaw cycles.
Stability:	Shelf life: one year from despatch.
Predicted Protein Size:	45kDa
Gene Name:	C-type lectin domain family 4 member M
Database Link:	Entrez Gene 10332 Human Q9H2X3



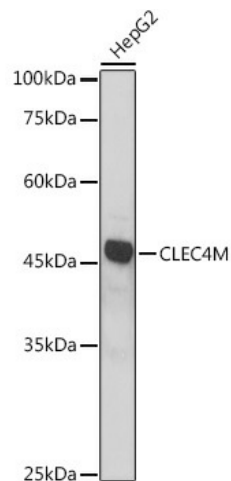
[View online »](#)

Background:

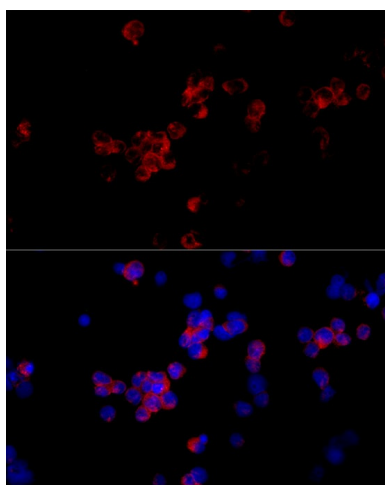
This gene encodes a C-type lectin that functions in cell adhesion and pathogen recognition. This receptor recognizes a wide range of evolutionarily divergent pathogens with a large impact on public health, including tuberculosis mycobacteria, and viruses including Ebola, hepatitis C, HIV-1, influenza A, West Nile virus and the SARS-CoV acute respiratory syndrome coronavirus. The protein is organized into four distinct domains: a C-terminal carbohydrate recognition domain, a flexible tandem-repeat neck domain of variable length, a transmembrane region and an N-terminal cytoplasmic domain involved in internalization. This gene is closely related in terms of both sequence and function to a neighboring gene, CD209 (Gene ID: 30835), also known as DC-SIGN. The two genes differ in viral recognition and expression patterns, with this gene showing high expression in endothelial cells of the liver, lymph node and placenta. Polymorphisms in the tandem repeat neck domain are associated with resistance to SARS infection.

Synonyms:

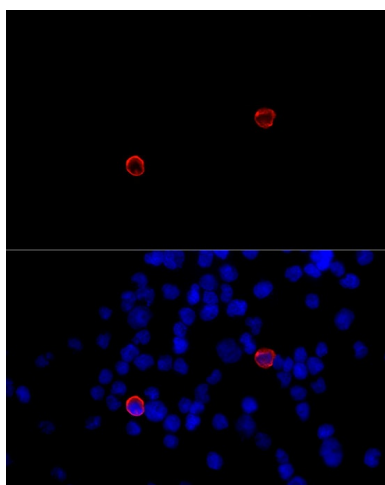
CD209L; CD209L1; CD299; DC-SIGN2; DC-SIGNR; DCSIGNR; HP10347; L-SIGN; LSIGN; MGC47866; MGC129964

Product images:


Western blot analysis of lysates from HepG2 cells



Immunofluorescence analysis of 293T cells using CLEC4M Rabbit pAb ([TA374871]) at dilution of 1:100 (40x lens). Secondary antibody: Cy3-conjugated Goat anti-Rabbit IgG (H+L) (AS007) at 1:500 dilution. Blue: DAPI for nuclear staining.



Immunofluorescence analysis of 293T-CD299 cells using CLEC4M Rabbit pAb ([TA374871]) at dilution of 1:100 (40x lens). Secondary antibody: Cy3-conjugated Goat anti-Rabbit IgG (H+L) (AS007) at 1:500 dilution. Blue: DAPI for nuclear staining.