

Product datasheet for **TA374854**

Claudin 5 (CLDN5) Rabbit Polyclonal Antibody

Product data:

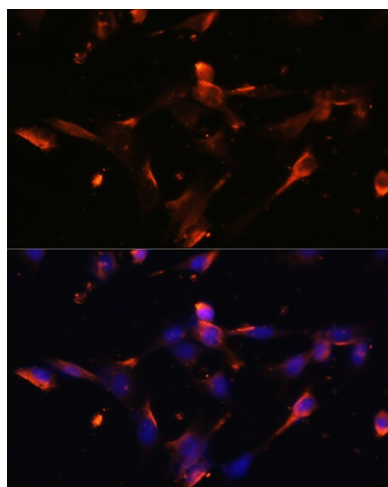
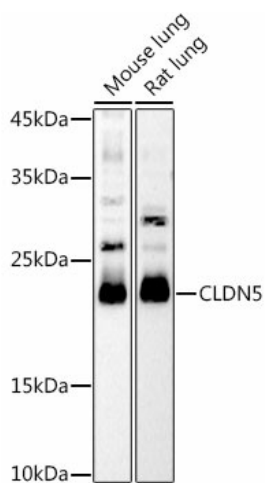
Product Type:	Primary Antibodies
Applications:	ICC/IF, WB
Recommended Dilution:	WB, 1:500 - 1:2000 IF, 1:50 - 1:200
Reactivity:	Human, Mouse, Rat
Modifications:	Unmodified
Host:	Rabbit
Isotype:	IgG
Clonality:	Polyclonal
Immunogen:	Recombinant fusion protein containing a sequence corresponding to amino acids 230-303 of human CLDN5 (NP_001124333.1).
Formulation:	Buffer: PBS with 0.02% sodium azide, 50% glycerol, pH 7.3.
Concentration:	lot specific
Purification:	Affinity purification
Conjugation:	Unconjugated
Storage:	Store at -20°C. Avoid freeze / thaw cycles.
Stability:	Shelf life: one year from despatch.
Predicted Protein Size:	23kDa
Gene Name:	claudin 5
Database Link:	Entrez Gene 7122 Human O00501
Background:	This gene encodes a member of the claudin family. Claudins are integral membrane proteins and components of tight junction strands. Tight junction strands serve as a physical barrier to prevent solutes and water from passing freely through the paracellular space between epithelial or endothelial cell sheets. Mutations in this gene have been found in patients with velocardiofacial syndrome. Alternatively spliced transcript variants encoding the same protein have been found for this gene.

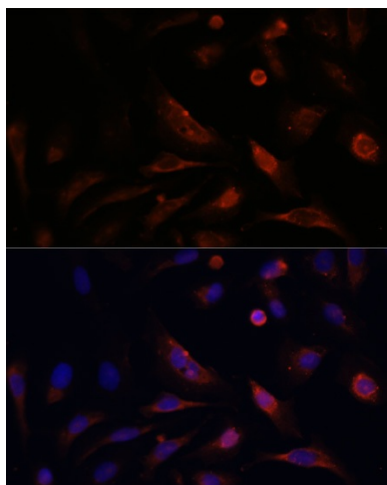


[View online »](#)

Synonyms: AWAL; BEC1; CPETRL1; OTTHUMP00000197372; OTTHUMP00000197819; TMDVCF; TMVCF

Product images:





Immunofluorescence analysis of U2OS cells using CLDN5 antibody (TA374854) at dilution of 1:100. Blue: DAPI for nuclear staining.