

Product datasheet for **TA374849**

CLDN19 Rabbit Polyclonal Antibody

Product data:

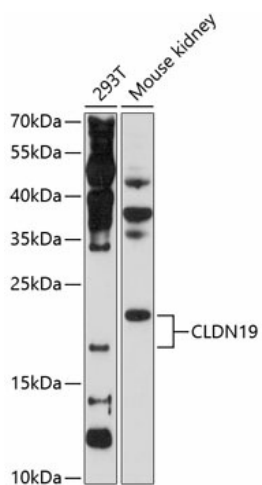
Product Type:	Primary Antibodies
Applications:	WB
Recommended Dilution:	WB,1:500 - 1:2000
Reactivity:	Human, Mouse
Modifications:	Unmodified
Host:	Rabbit
Isotype:	IgG
Clonality:	Polyclonal
Immunogen:	Recombinant fusion protein containing a sequence corresponding to amino acids 20-80 of human CLDN19 (NP_001116867.1).
Formulation:	Buffer: PBS with 0.02% sodium azide,50% glycerol,pH7.3.
Concentration:	lot specific
Purification:	Affinity purification
Conjugation:	Unconjugated
Storage:	Store at -20°C. Avoid freeze / thaw cycles.
Stability:	Shelf life: one year from despatch.
Predicted Protein Size:	22kDa/23kDa
Gene Name:	claudin 19
Database Link:	Entrez Gene 149461 Human Q8N6F1
Background:	The product of this gene belongs to the claudin family. It plays a major role in tight junction-specific obliteration of the intercellular space, through calcium-independent cell-adhesion activity. Defects in this gene are the cause of hypomagnesemia renal with ocular involvement (HOMGO). HOMGO is a progressive renal disease characterized by primary renal magnesium wasting with hypomagnesemia, hypercalciuria and nephrocalcinosis associated with severe ocular abnormalities such as bilateral chorioretinal scars, macular colobomata, significant myopia and nystagmus. Alternatively spliced transcript variants encoding distinct isoforms have been identified for this gene.



[View online »](#)

Synonyms: CLDN19

Product images:



Western blot analysis of extracts of various cell lines, using CLDN19 Antibody (TA374849) at 1:1000 dilution. | Secondary antibody: HRP Goat Anti-Rabbit IgG (H+L) at 1:10000 dilution. | Lysates/proteins: 25ug per lane. | Blocking buffer: 3% nonfat dry milk in TBST. | Detection: ECL Basic Kit . | Exposure time: 40s.