

Product datasheet for **TA374846**

CLDN16 Rabbit Polyclonal Antibody

Product data:

| | |
|-------------------------|---|
| Product Type: | Primary Antibodies |
| Applications: | ELISA, WB |
| Recommended Dilution: | WB, 1:100 - 1:500 ELISA, Recommended starting concentration is 1 µg/mL. Please optimize the concentration based on your specific assay requirements. |
| Reactivity: | Human, Mouse |
| Modifications: | Unmodified |
| Host: | Rabbit |
| Isotype: | IgG |
| Clonality: | Polyclonal |
| Formulation: | Buffer: PBS with 0.02% sodium azide, 50% glycerol, pH 7.3. |
| Concentration: | lot specific |
| Purification: | Affinity purification |
| Conjugation: | Unconjugated |
| Storage: | Store at -20°C. Avoid freeze / thaw cycles. |
| Stability: | Shelf life: one year from despatch. |
| Predicted Protein Size: | 26kDa |
| Gene Name: | claudin 16 |
| Database Link: | Entrez Gene 10686 Human Q9Y5I7 |

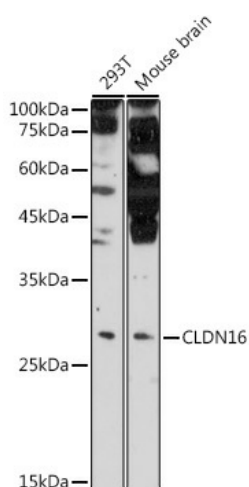
[View online »](#)

Background:

Tight junctions represent one mode of cell-to-cell adhesion in epithelial or endothelial cell sheets, forming continuous seals around cells and serving as a physical barrier to prevent solutes and water from passing freely through the paracellular space. These junctions are comprised of sets of continuous networking strands in the outwardly facing cytoplasmic leaflet, with complementary grooves in the inwardly facing extracytoplasmic leaflet. The protein encoded by this gene, a member of the claudin family, is an integral membrane protein and a component of tight junction strands. It is found primarily in the kidneys, specifically in the thick ascending limb of Henle, where it acts as either an intercellular pore or ion concentration sensor to regulate the paracellular resorption of magnesium ions. Defects in this gene are a cause of primary hypomagnesemia, which is characterized by massive renal magnesium wasting with hypomagnesemia and hypercalciuria, resulting in nephrocalcinosis and renal failure. This gene and the CLDN1 gene are clustered on chromosome 3q28.

Synonyms:

HOMG3; paracellin-1; PCLN-1; PCLN1

Product images:


Western blot analysis of various lysates using CLDN16 Rabbit pAb (TA374846) at 1:500 dilution. Secondary antibody: HRP-conjugated Goat anti-Rabbit IgG (H+L) (AS014) at 1:10000 dilution. Lysates/proteins: 25µg per lane. Blocking buffer: 3% nonfat dry milk in TBST. Detection: ECL Enhanced Kit (RM00021). Exposure time: 180s.