

## Product datasheet for **TA374837S**

### CLCC1 Rabbit Polyclonal Antibody

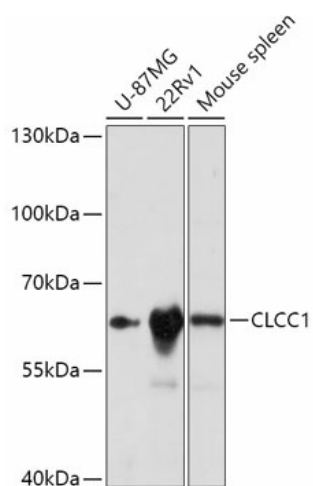
#### Product data:

Product Type:	Primary Antibodies
Applications:	IHC, WB
Recommended Dilution:	WB, 1:500 - 1:2000 IHC, 1:50 - 1:200
Reactivity:	Human, Mouse
Modifications:	Unmodified
Host:	Rabbit
Isotype:	IgG
Clonality:	Polyclonal
Immunogen:	Recombinant fusion protein containing a sequence corresponding to amino acids 302-501 of human CLCC1 (NP_055942.1).
Formulation:	Buffer: PBS with 0.02% sodium azide, 50% glycerol, pH 7.3.
Concentration:	lot specific
Purification:	Affinity purification
Conjugation:	Unconjugated
Storage:	Store at -20°C. Avoid freeze / thaw cycles.
Stability:	Shelf life: one year from despatch.
Gene Name:	chloride channel CLIC like 1
Database Link:	<a href="#">Entrez Gene 23155 Human Q96S66</a>
Background:	Seems to act as a chloride ion channel. Plays a role in retina development.
Synonyms:	KIAA0761; MCLC; OTTHUMP00000013438



[View online »](#)

## Product images:



Western blot analysis of extracts of various cell lines, using CLCC1 antibody ([TA374837]) at 1:1000 dilution. | Secondary antibody: HRP Goat Anti-Rabbit IgG (H+L) at 1:10000 dilution. | Lysates/proteins: 25ug per lane. | Blocking buffer: 3% nonfat dry milk in TBST. | Detection: ECL Basic Kit . | Exposure time: 3s.