

## Product datasheet for **TA374835**

### CLCA1 Rabbit Polyclonal Antibody

#### Product data:

Product Type:	Primary Antibodies
Applications:	ICC/IF, WB
Recommended Dilution:	WB,1:500 - 1:2000 IHC,1:50 - 1:100 IF,1:50 - 1:100
Reactivity:	Human, Mouse, Rat
Modifications:	Unmodified
Host:	Rabbit
Isotype:	IgG
Clonality:	Polyclonal
Immunogen:	Recombinant fusion protein containing a sequence corresponding to amino acids 22-150 of human CLCA1 (NP_001276.2).
Formulation:	Buffer: PBS with 0.02% sodium azide,50% glycerol,pH7.3.
Concentration:	lot specific
Purification:	Affinity purification
Conjugation:	Unconjugated
Storage:	Store at -20°C. Avoid freeze / thaw cycles.
Stability:	Shelf life: one year from despatch.
Predicted Protein Size:	100kDa
Gene Name:	chloride channel accessory 1
Database Link:	<a href="#">Entrez Gene 1179 Human A8K7I4</a>



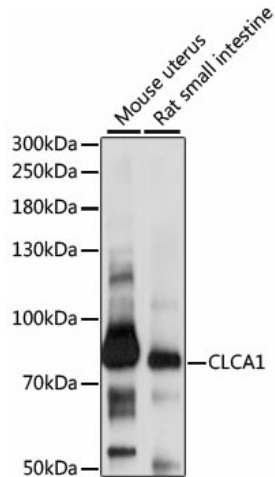
[View online »](#)

**Background:**

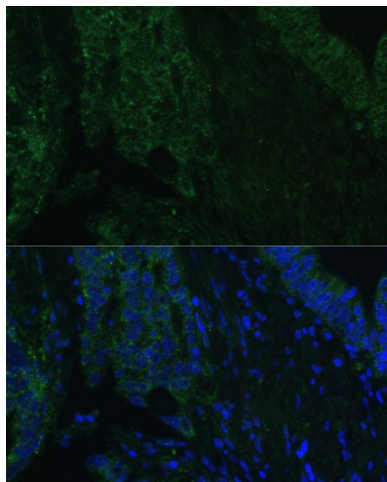
This gene encodes a member of the calcium sensitive chloride conductance protein family. To date, all members of this gene family map to the same region on chromosome 1p31-p22 and share a high degree of homology in size, sequence, and predicted structure, but differ significantly in their tissue distributions. The encoded protein is expressed as a precursor protein that is processed into two cell-surface-associated subunits, although the site at which the precursor is cleaved has not been precisely determined. The encoded protein may be involved in mediating calcium-activated chloride conductance in the intestine.

**Synonyms:**

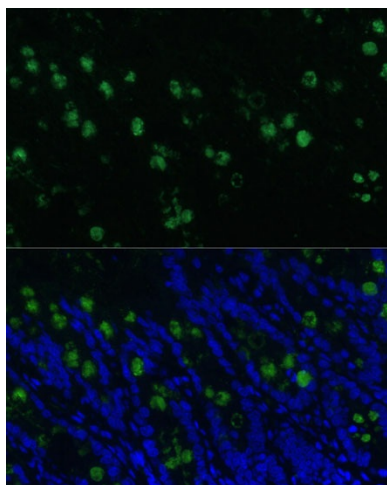
CaCC; CaCC-1; CACC1; CLCRG1; FLJ95147; GOB5; hCaCC-1; hCLCA1; OTTHUMP00000011907

**Product images:**


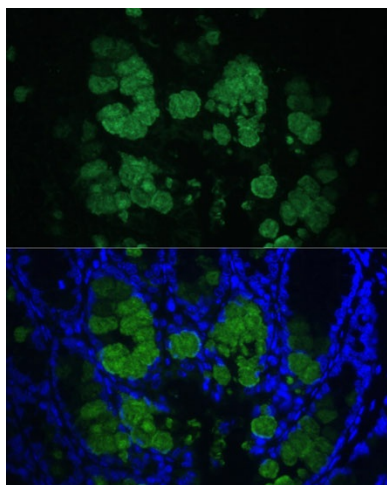
Western blot analysis of extracts of various cell lines, using CLCA1 antibody (TA374835) at 1:1000 dilution. | Secondary antibody: HRP Goat Anti-Rabbit IgG (H+L) at 1:10000 dilution. | Lysates/proteins: 25ug per lane. | Blocking buffer: 3% nonfat dry milk in TBST. | Detection: ECL Basic Kit . | Exposure time: 20s.



Immunofluorescence analysis of human colon carcinoma using CLCA1 Polyclonal Antibody (TA374835) at dilution of 1:100 (40x lens). Blue: DAPI for nuclear staining.



Immunofluorescence analysis of rat colon using CLCA1 Polyclonal Antibody (TA374835) at dilution of 1:100 (40x lens). Blue: DAPI for nuclear staining.



Immunofluorescence analysis of mouse colon using CLCA1 Polyclonal Antibody (TA374835) at dilution of 1:100 (40x lens). Blue: DAPI for nuclear staining.