

## Product datasheet for **TA374821**

### ch TOG (CKAP5) Rabbit Polyclonal Antibody

#### Product data:

Product Type:	Primary Antibodies
Applications:	ICC/IF, IP, WB
Recommended Dilution:	WB,1:500 - 1:2000 IF,1:50 - 1:200 IP,1:50 - 1:200
Reactivity:	Human, Mouse, Rat
Modifications:	Unmodified
Host:	Rabbit
Isotype:	IgG
Clonality:	Polyclonal
Immunogen:	Recombinant fusion protein containing a sequence corresponding to amino acids 1763-2032 of human CKAP5 (NP_001008938.1).
Formulation:	Buffer: PBS with 0.02% sodium azide,50% glycerol,pH7.3.
Concentration:	lot specific
Purification:	Affinity purification
Conjugation:	Unconjugated
Storage:	Store at -20°C. Avoid freeze / thaw cycles.
Stability:	Shelf life: one year from despatch.
Predicted Protein Size:	218kDa/225kDa/226kDa
Gene Name:	cytoskeleton associated protein 5
Database Link:	<a href="#">Entrez Gene 9793 Human Q14008</a>



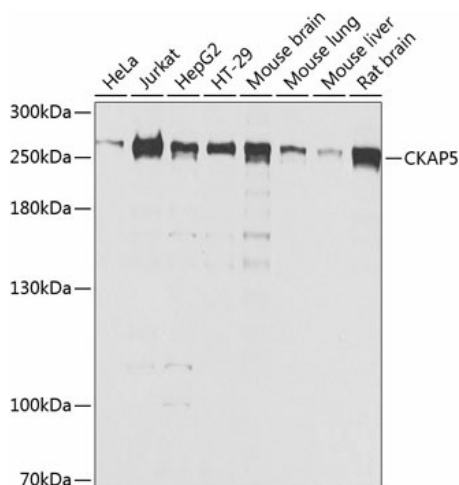
[View online »](#)

**Background:**

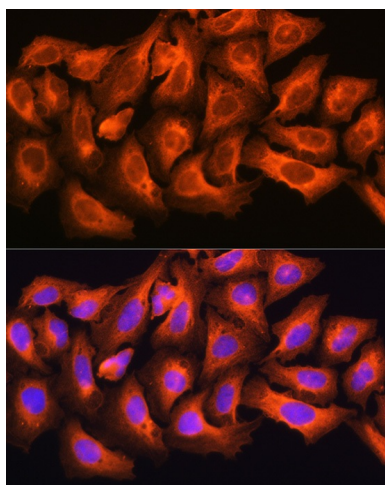
This gene encodes a cytoskeleton-associated protein which belongs to the TOG/XMAP215 family. The N-terminal half of this protein contains a microtubule-binding domain and the C-terminal half contains a KXGS motif for binding tubulin dimers. This protein has two distinct roles in spindle formation; it protects kinetochore microtubules from depolymerization and plays an essential role in centrosomal microtubule assembly. This protein may be necessary for the proper interaction of microtubules with the cell cortex for directional cell movement. It also plays a role in translation of the myelin basic protein (MBP) mRNA by interacting with heterogeneous nuclear ribonucleoprotein (hnRNP) A2, which associates with MBP. Alternatively spliced transcript variants encoding different isoforms have been identified.

**Synonyms:**

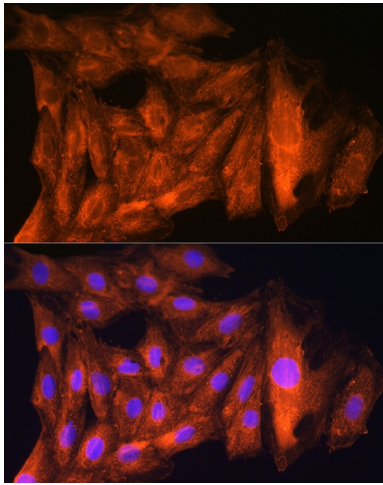
ch-TOG; CHTOG; FLJ35359; KIAA0097; MSPS; TOG; TOGp

**Product images:**


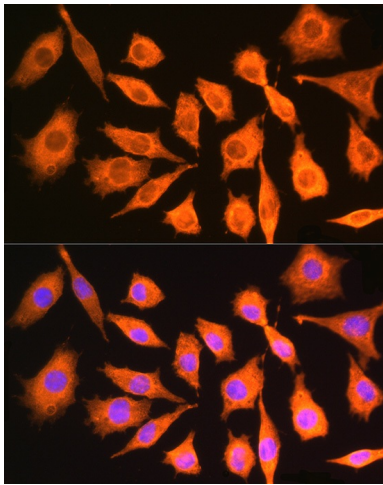
Western blot analysis of extracts of various cell lines, using CKAP5 antibody (TA374821) at 1:1000 dilution. | Secondary antibody: HRP Goat Anti-Rabbit IgG (H+L) at 1:10000 dilution. | Lysates/proteins: 25ug per lane. | Blocking buffer: 3% nonfat dry milk in TBST. | Detection: ECL Basic Kit . | Exposure time: 10s.



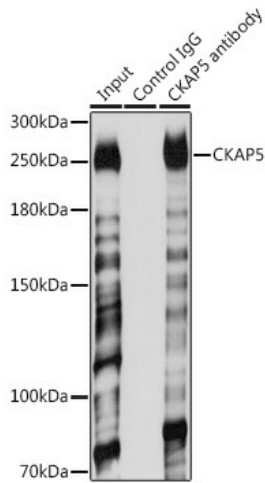
Immunofluorescence analysis of U2OS cells using CKAP5 antibody (TA374821) at dilution of 1:100. Blue: DAPI for nuclear staining.



Immunofluorescence analysis of Rat H9C2 cells using CKAP5 antibody (TA374821) at dilution of 1:100. Blue: DAPI for nuclear staining.



Immunofluorescence analysis of Mouse L929 cells using CKAP5 antibody (TA374821) at dilution of 1:100. Blue: DAPI for nuclear staining.



Immunoprecipitation analysis of 200ug extracts of Jurkat cells using 3ug CKAP5 antibody (TA374821). Western blot was performed from the immunoprecipitate using CKAP5 antibody (TA374821) at a dilution of 1:1000.