

Product datasheet for **TA374820S**

CKAP4 Rabbit Polyclonal Antibody

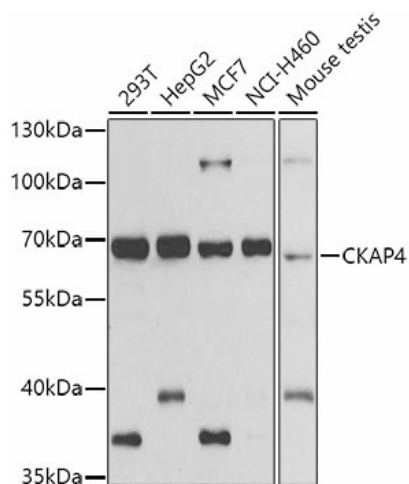
Product data:

Product Type:	Primary Antibodies
Applications:	ICC/IF, WB
Recommended Dilution:	WB,1:500 - 1:2000 IHC,1:50 - 1:100 IF,1:50 - 1:100
Reactivity:	Human, Mouse, Rat
Modifications:	Unmodified
Host:	Rabbit
Isotype:	IgG
Clonality:	Polyclonal
Immunogen:	A synthetic peptide of human CKAP4
Formulation:	Buffer: PBS with 0.02% sodium azide,50% glycerol,pH7.3.
Concentration:	lot specific
Purification:	Affinity purification
Conjugation:	Unconjugated
Storage:	Store at -20°C. Avoid freeze / thaw cycles.
Stability:	Shelf life: one year from despatch.
Predicted Protein Size:	66kDa
Gene Name:	cytoskeleton-associated protein 4
Database Link:	Entrez Gene 10970 Human Q07065
Background:	Mediates the anchoring of the endoplasmic reticulum to microtubules.
Synonyms:	CLIMP-63; ERGIC-63; MGC99554; p63

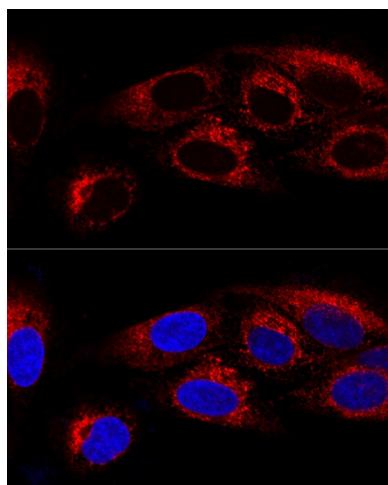


[View online »](#)

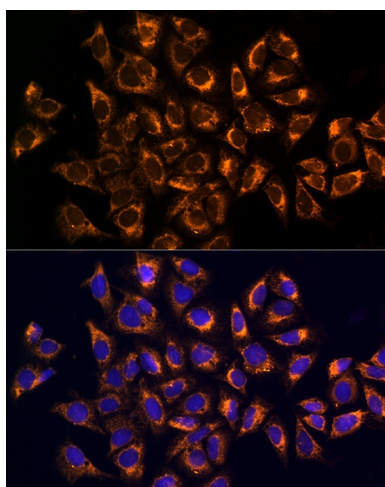
Product images:



Western blot analysis of extracts of various cell lines, using CKAP4 antibody ([TA374820]) at 1:500 dilution. | Secondary antibody: HRP Goat Anti-Rabbit IgG (H+L) at 1:10000 dilution. | Lysates/proteins: 25ug per lane. | Blocking buffer: 3% nonfat dry milk in TBST. | Detection: ECL Basic Kit . | Exposure time: 90s.



Confocal immunofluorescence analysis of U2OS cells using CKAP4 Polyclonal Antibody ([TA374820]) at dilution of 1:100. Blue: DAPI for nuclear staining.



Immunofluorescence analysis of U2OS cells using CKAP4 Rabbit pAb ([TA374820]) at dilution of 1:100. Blue: DAPI for nuclear staining.