

Product datasheet for **TA374810**

Cirhin (UTP4) Rabbit Polyclonal Antibody

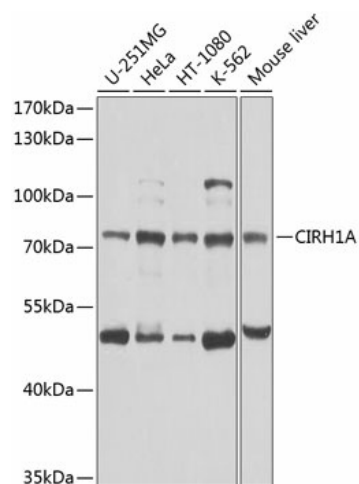
Product data:

| | |
|-------------------------|---|
| Product Type: | Primary Antibodies |
| Applications: | WB |
| Recommended Dilution: | WB,1:500 - 1:2000 |
| Reactivity: | Human, Mouse |
| Modifications: | Unmodified |
| Host: | Rabbit |
| Isotype: | IgG |
| Clonality: | Polyclonal |
| Immunogen: | Recombinant fusion protein containing a sequence corresponding to amino acids 497-686 of human CIRH1A (NP_116219.2). |
| Formulation: | Buffer: PBS with 0.02% sodium azide,50% glycerol,pH7.3. |
| Concentration: | lot specific |
| Purification: | Affinity purification |
| Conjugation: | Unconjugated |
| Storage: | Store at -20°C. Avoid freeze / thaw cycles. |
| Stability: | Shelf life: one year from despatch. |
| Predicted Protein Size: | 64kDa/69kDa/76kDa |
| Gene Name: | UTP4, small subunit processome component |
| Database Link: | Entrez Gene 84916 Human Q969X6 |
| Background: | This gene encodes a WD40-repeat-containing protein that is localized to the nucleolus. Mutation of this gene causes North American Indian childhood cirrhosis, a severe intrahepatic cholestasis that results in transient neonatal jaundice, and progresses to periportal fibrosis and cirrhosis in childhood and adolescence. Alternative splicing results in multiple transcript variants. |



[View online »](#)

Product images:



Western blot analysis of extracts of various cell lines, using CIRH1A antibody (TA374810) at 1:1000 dilution. | Secondary antibody: HRP Goat Anti-Rabbit IgG (H+L) at 1:10000 dilution. | Lysates/proteins: 25ug per lane. | Blocking buffer: 3% nonfat dry milk in TBST. | Detection: ECL Basic Kit . | Exposure time: 5s.