

## Product datasheet for **TA374807**

### CBF1 interacting corepressor (CIR1) Rabbit Polyclonal Antibody

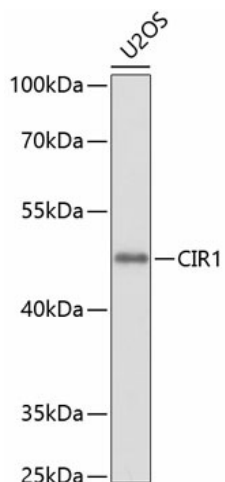
#### Product data:

Product Type:	Primary Antibodies
Applications:	WB
Recommended Dilution:	WB,1:500 - 1:2000
Reactivity:	Human
Modifications:	Unmodified
Host:	Rabbit
Isotype:	IgG
Clonality:	Polyclonal
Immunogen:	Recombinant fusion protein containing a sequence corresponding to amino acids 1-160 of human CIR1 (NP_004873.3).
Formulation:	Buffer: PBS with 0.02% sodium azide,50% glycerol,pH7.3.
Concentration:	lot specific
Purification:	Affinity purification
Conjugation:	Unconjugated
Storage:	Store at -20°C. Avoid freeze / thaw cycles.
Stability:	Shelf life: one year from despatch.
Predicted Protein Size:	23kDa/52kDa
Gene Name:	corepressor interacting with RBPJ, 1
Database Link:	<a href="#">Entrez Gene 9541 Human Q86X95</a>
Background:	May modulate splice site selection during alternative splicing of pre-mRNAs (By similarity. Regulates transcription and acts as corepressor for RBPJ. Recruits RBPJ to the Sin3-histone deacetylase complex (HDAC. Required for RBPJ-mediated repression of transcription.
Synonyms:	1700023B02Rik; 1700023b02rik; 2810021A19Rik; Cicr; Cir; RGD1309199; RP23-463K8.2



[View online »](#)

## Product images:



Western blot analysis of extracts of U2OS cells, using CIR1 antibody (TA374807) at 1:1000 dilution. | Secondary antibody: HRP Goat Anti-Rabbit IgG (H+L) at 1:10000 dilution. | Lysates/proteins: 25ug per lane. | Blocking buffer: 3% nonfat dry milk in TBST. | Detection: ECL Basic Kit . | Exposure time: 30s.