

Product datasheet for **TA374805S**

CIDE B (CIDEB) Rabbit Polyclonal Antibody

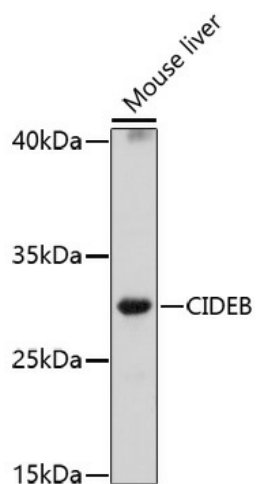
Product data:

Product Type:	Primary Antibodies
Applications:	ELISA, WB
Recommended Dilution:	WB, 1:500 - 1:2000 ELISA, Recommended starting concentration is 1 µg/mL. Please optimize the concentration based on your specific assay requirements.
Reactivity:	Mouse
Host:	Rabbit
Isotype:	IgG
Clonality:	Polyclonal
Formulation:	Buffer: PBS with 0.02% sodium azide, 50% glycerol, pH 7.3.
Concentration:	lot specific
Purification:	Affinity purification
Conjugation:	Unconjugated
Storage:	Store at -20°C. Avoid freeze / thaw cycles.
Stability:	Shelf life: one year from despatch.
Predicted Protein Size:	25kDa
Gene Name:	cell death-inducing DFFA-like effector b
Database Link:	Q9UHD4
Background:	Enables identical protein binding activity. Involved in activation of cysteine-type endopeptidase activity; positive regulation of cell death; and positive regulation of release of cytochrome c from mitochondria. Acts upstream of or within apoptotic process. Located in cytosol and perinuclear region of cytoplasm.
Synonyms:	CIDEB



[View online »](#)

Product images:



Western blot analysis of lysates from mouse liver