

Product datasheet for **TA374804**

CIDE B (CIDEB) Rabbit Polyclonal Antibody

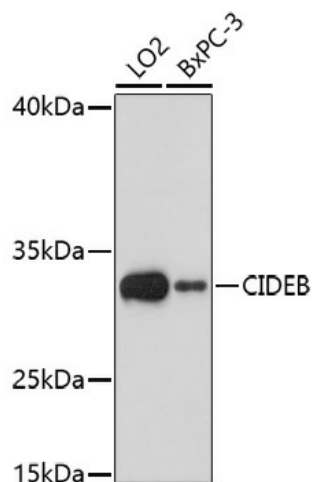
Product data:

Product Type:	Primary Antibodies
Applications:	WB
Recommended Dilution:	WB,1:500 - 1:2000
Reactivity:	Human
Host:	Rabbit
Isotype:	IgG
Clonality:	Polyclonal
Immunogen:	Recombinant fusion protein containing a sequence corresponding to amino acids 80-160 of human CIDEB (NP_001305736).
Formulation:	Buffer: PBS with 0.02% sodium azide,50% glycerol,pH7.3.
Concentration:	lot specific
Purification:	Affinity purification
Conjugation:	Unconjugated
Storage:	Store at -20°C. Avoid freeze / thaw cycles.
Stability:	Shelf life: one year from despatch.
Gene Name:	cell death-inducing DFFA-like effector b
Database Link:	Entrez Gene 27141 Human Q9UHD4
Background:	Activates apoptosis.; (Microbial infection Involved in Hepatitis C virus (HCV assembly and required for HCV entry into hepatocytes.
Synonyms:	CIDEB



[View online »](#)

Product images:



Western blot analysis of extracts of various cell lines, using CIDEB antibody (TA374804) at 1:1000 dilution. | Secondary antibody: HRP Goat Anti-Rabbit IgG (H+L) at 1:10000 dilution. | Lysates/proteins: 25ug per lane. | Blocking buffer: 3% nonfat dry milk in TBST. | Detection: ECL Basic Kit . | Exposure time: 30s.