

Product datasheet for **TA374795**

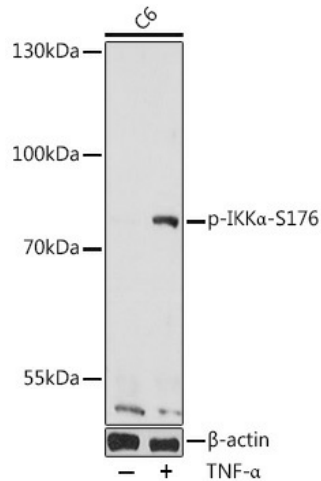
IKK alpha (CHUK) Rabbit Polyclonal Antibody

Product data:

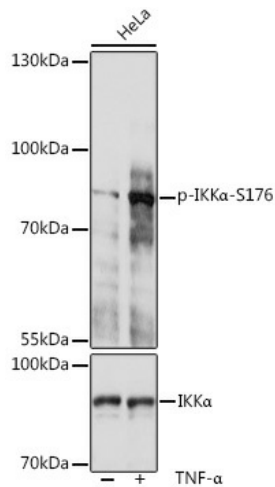
Product Type:	Primary Antibodies
Applications:	WB
Recommended Dilution:	WB,1:500 - 1:2000
Reactivity:	Human, Mouse, Rat
Modifications:	Phospho S176
Host:	Rabbit
Isotype:	IgG
Clonality:	Polyclonal
Immunogen:	A synthetic phosphorylated peptide around S176 of human IKK α (NP_001269.3).
Formulation:	Buffer: PBS with 0.02% sodium azide,50% glycerol,pH7.3.
Concentration:	lot specific
Purification:	Affinity purification
Conjugation:	Unconjugated
Storage:	Store at -20°C. Avoid freeze / thaw cycles.
Stability:	Shelf life: one year from despatch.
Predicted Protein Size:	84kDa
Gene Name:	conserved helix-loop-helix ubiquitous kinase
Database Link:	Entrez Gene 1147 Human O15111
Background:	This gene encodes a member of the serine/threonine protein kinase family. The encoded protein, a component of a cytokine-activated protein complex that is an inhibitor of the essential transcription factor NF-kappa-B complex, phosphorylates sites that trigger the degradation of the inhibitor via the ubiquitination pathway, thereby activating the transcription factor.
Synonyms:	IkBKA; IKK-A; IKK-alpha; IKK1; IKKA; NFKBIKA; TCF16



[View online »](#)

Product images:


Western blot analysis of extracts of C6 cells, using Phospho-IKKα-S176 antibody (TA374795) at 1:1000 dilution. C6 cells were treated by TNF-α (20 ng/mL) at 37°C for 30 minutes. | Secondary antibody: HRP Goat Anti-Rabbit IgG (H+L) at 1:10000 dilution. | Lysates/proteins: 25ug per lane. | Blocking buffer: 3% BSA. | Detection: ECL Basic Kit. | Exposure time: 30s.



Western blot analysis of extracts of HeLa cells, using Phospho-IKKα-S176 pAb (TA374795) at 1:1000 dilution or IKK alpha antibody (A0423). HeLa cells were treated by TNF-α (20 ng/mL) at 37°C for 30 minutes. | Secondary antibody: HRP Goat Anti-Rabbit IgG (H+L) at 1:10000 dilution. | Lysates/proteins: 25ug per lane. | Blocking buffer: 3% BSA. | Detection: ECL Basic Kit. | Exposure time: 30s.